

VISION SPONSOR

Compeer Financial

MISSION SPONSORS

Boehringer Ingelheim Animal Health
Focus on Energy
Land O'Lakes
MorganMyers
Mycogen Seeds
Professional Dairy Producers Foundation
Dairy Farmers of Wisconsin

CORPORATE SPONSORS

Agri-View
Alforex Seeds
American Foods Group
ANIMART
Arm & Hammer Animal Nutrition
Bayland Buildings
BMO Harris Bank
BouMatic
CP Feeds LLC
Dairyland Seed Co., Inc.
Diamond V
FarmFirst Dairy Cooperative
Foremost Farms USA
GEA
GreenStone Farm Credit Services
Investors Community Bank
Landmark Services Cooperative
Progressive Dairy
Roto-Mix
Twohig Rietbrock Schneider & Halbach, S.C.
USAgNet LLC
Wisconsin Cheese Makers Association
Zoetis

Continuing Education Credit opportunities
available: up to 6 CEU



#myPDPW



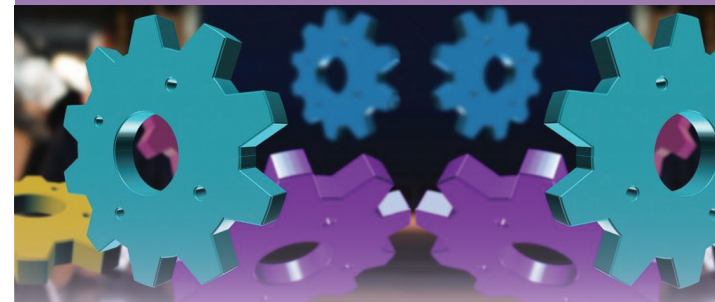
Professional Dairy Producers®

820 N. Main St., Suite D
Juneau, WI 53039
800-947-7379

mail@pdpw.org www.pdpw.org #mypdpw



hispanic *CONFLICT* MANAGEMENT workshop



TAUGHT EXCLUSIVELY IN SPANISH

Jan. 28, 2020 in Oshkosh, Wis.

Jan. 29, 2020 in Eau Claire, Wis.



Tuesday, January 28, 2020

La Sure's Hall, 3125 S. Washburn St.
Oshkosh, Wis.

9:00 am Registration
9:30 Workshop begins
12:00 pm Lunch
3:45 Workshop concludes

**¡Este día de
entrenamiento está
diseñado para ti!**

Aprenda cómo la forma en que se comunica y maneja conflictos puede afectar las relaciones con sus compañeros, gerentes, dueños del establo y ambiente de trabajo. Al finalizar, tendrá nuevas herramientas y estrategias, que le permitirán resolver conflictos y construir relaciones de una manera positiva. Cuando el conflicto es bien manejado, aumenta la creatividad, el entusiasmo y la eficiencia en los equipos de trabajo.

workshop presenters



LISA ANDERSON

With a Master's degree from UW-Madison in Curriculum & Instruction/German & English as a Second Language (ESL) Lisa has been an educator in ESL, German, and College Success courses for 15 years. She earned her bachelor's degree in German Education from Concordia College in Moorhead, Minn., and taught in Germany at the International School of Düsseldorf. She also taught in Micronesia as an English as a Second Language teacher in the Peace Corps. From 2016 to 2018 Lisa lived in Central America and educated elementary and middle school students in ESL. Lisa recently completed a 13-credit Community Interpreting Certificate program at Viterbo University where she worked on Spanish-English language access in agriculture, rural health and K-12 education.

Wednesday, January 29, 2020

Holiday Inn Eau Claire South, 4751 Owen Ayres Ct.
Eau Claire, Wis.

TESTING OUR PERSONALITIES

Our personalities are a driving force behind how we conduct ourselves and react to situations. Good communicators know when to adjust their own style and how to bring out the best in others. Open and honest interaction may not be difficult for you when there's no conflict. But challenging and stressful events tend to trip up even the best of communicators.

Discover your personal communication style and learn how to finesse your weaknesses so interactions with team members are more productive. In this session you'll work with different communication styles and learn first-hand why active listening is critical. Working in group settings, this session will give you the opportunity to practice active listening.

MANAGING CONFLICT

Conflict isn't bad; it's how we handle ourselves and the situation that determines a positive or negative outcome. In this session we'll define conflict and outline the factors that can lead to challenges within teams. Through role-playing activities, you'll develop a game plan and gather prevention strategies to effectively manage uncomfortable situations. After taking a closer look at cultural barriers, identifying ways to overcome them will become much clearer. Engaging in smooth and effective communication will be within reach.



NATALIA HINCAPIÉ

Born in Medellín, Colombia, Natalia's love of animals began in her early life. She earned her bachelor's degree in Veterinary Medicine from the University of Antioquia in 2006. Later, she worked for 8 years as a bovine reproduction and nutrition specialist for Finca S.A. Natalia has been the lead trainer in different farming education programs. After migrating to the U.S. in 2012, she worked first with small animals in Florida and then moved to Westby, Wis. She later worked as a laboratory technician for ST Genetics. Currently, Natalia is enrolled in the Community Interpreting Certificate program at Viterbo University and has served as a volunteer interpreter on a trip to Costa Rica with Global Partners.

hispanic *CONFLICT* MANAGEMENT workshop

Name _____

Business/Farm Name _____

Address _____

City _____ State _____ Zip _____

Address _____

Phone (with area code) _____

Email _____

Check the date and location attending:

_____ Tuesday, January 28 Oshkosh, Wis.
_____ Wednesday, January 29 Eau Claire, Wis.

Registration fee covers workshop, materials and lunch

Members: \$200 each; \$100/add'l individuals from same dairy.
Non-members: \$325 each; \$100/add'l individuals from same dairy.

	Member	Non-member
First Participant	\$200 each	\$325 each
_____	\$ _____	\$ _____
Additional Participants	\$100 each	\$100 each
_____	\$ _____	\$ _____
_____	\$ _____	\$ _____
_____	\$ _____	\$ _____
TOTAL	\$ _____	\$ _____

Credit Card Payment Information

Credit Card # _____

Exp. Date _____ CVC # _____

Register online at www.pdpw.org.

Or, if paying by check, make payable to PDPW. Mail completed form with check to PDPW; 820 N. Main St., Suite D, Juneau, WI 53039. Or call 800-947-7379.

