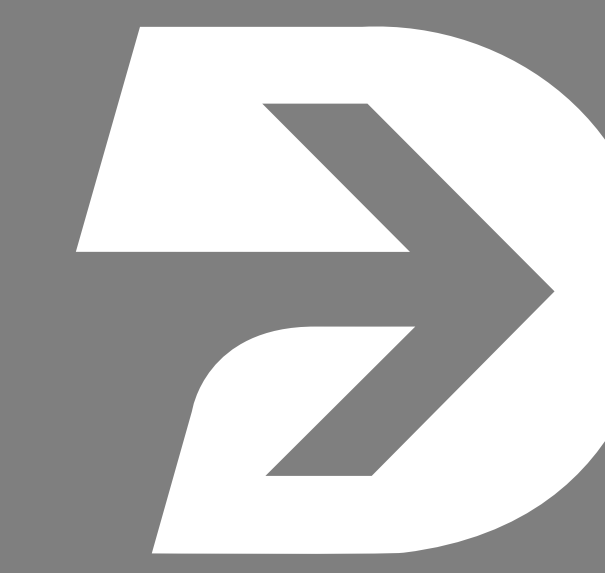


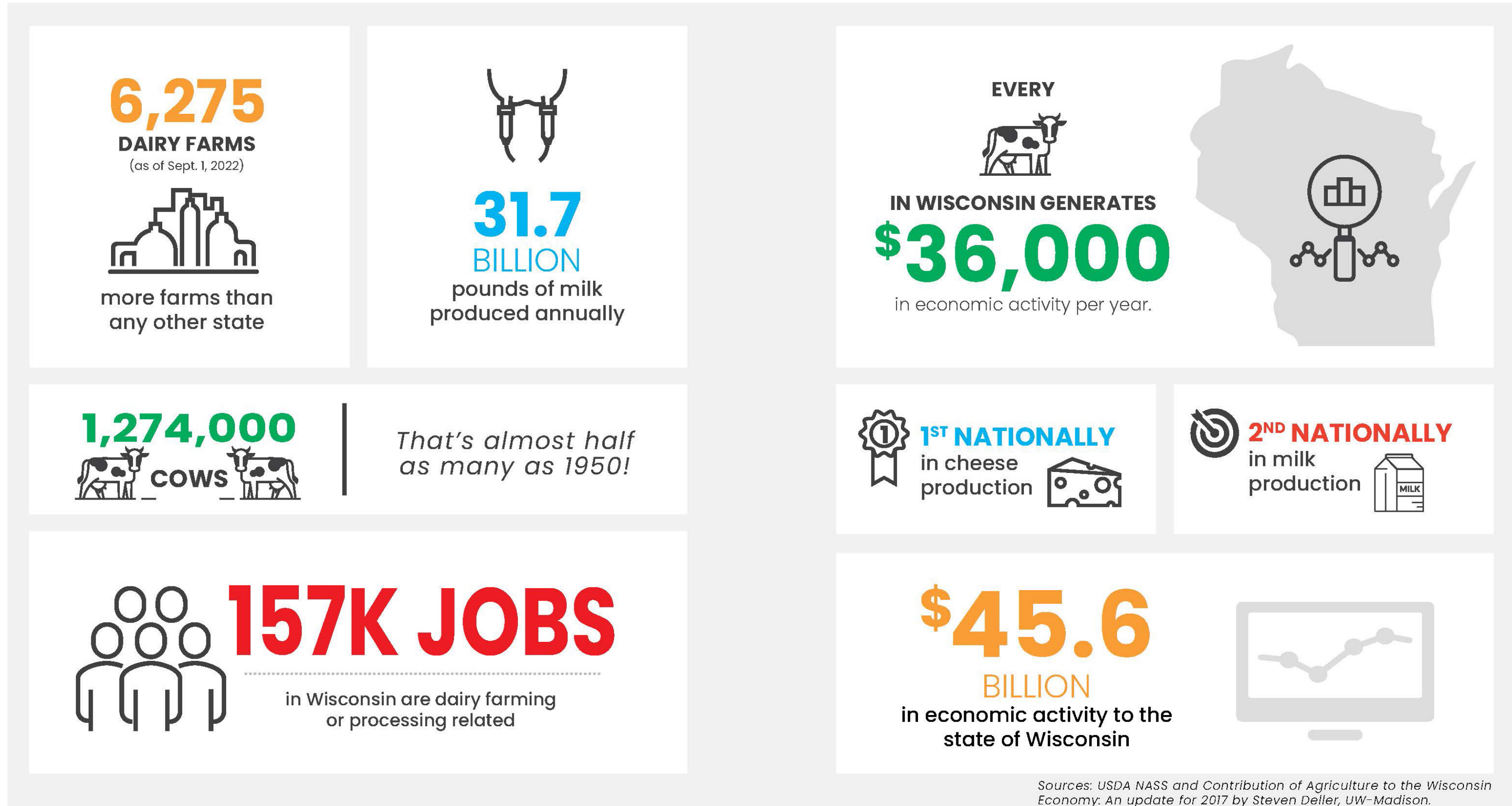
Collaboration advances sustainability for Wisconsin dairy

harnessing research and development to produce dairy products in an economically, environmentally, and socially sustainable manner

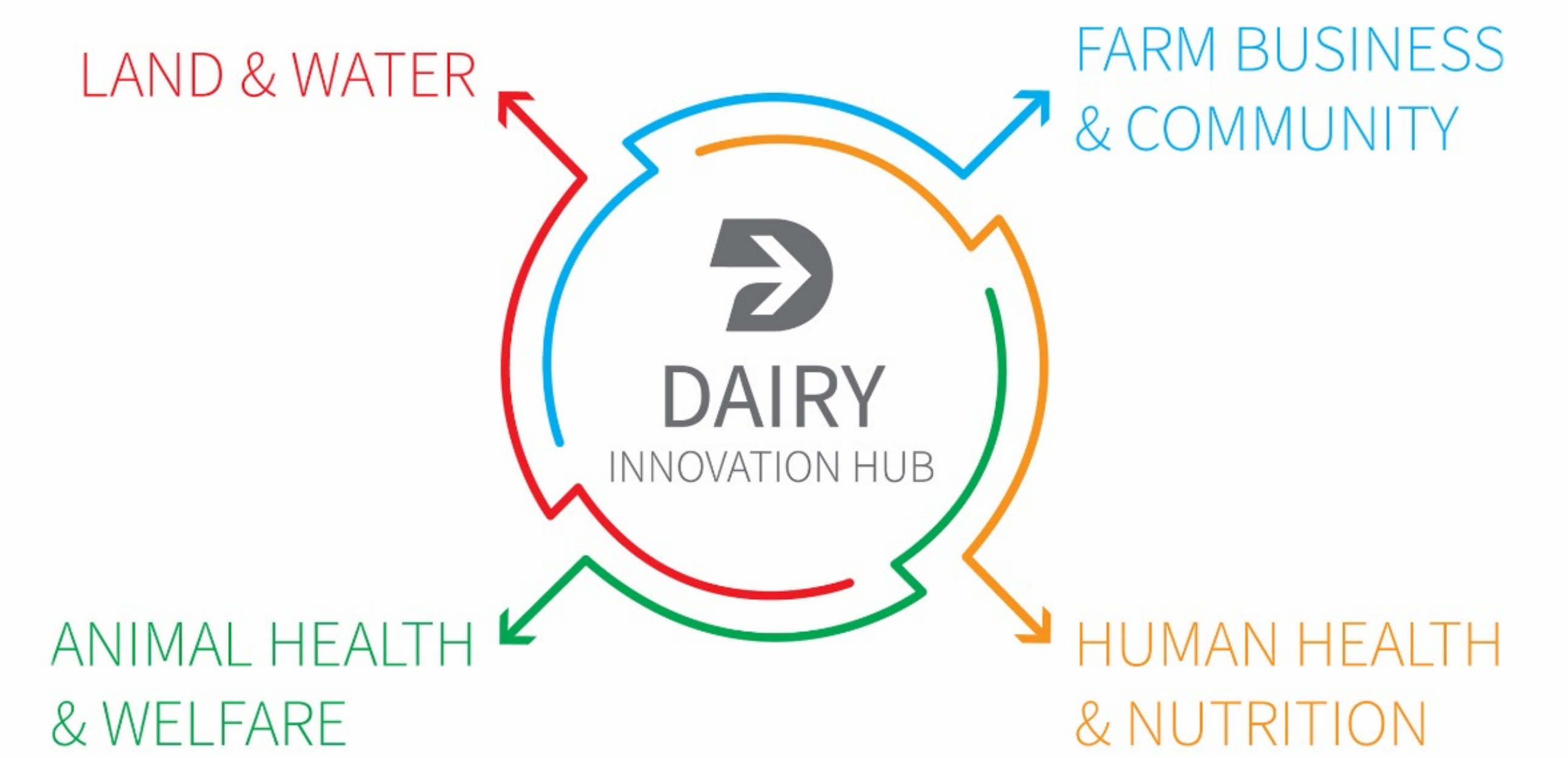
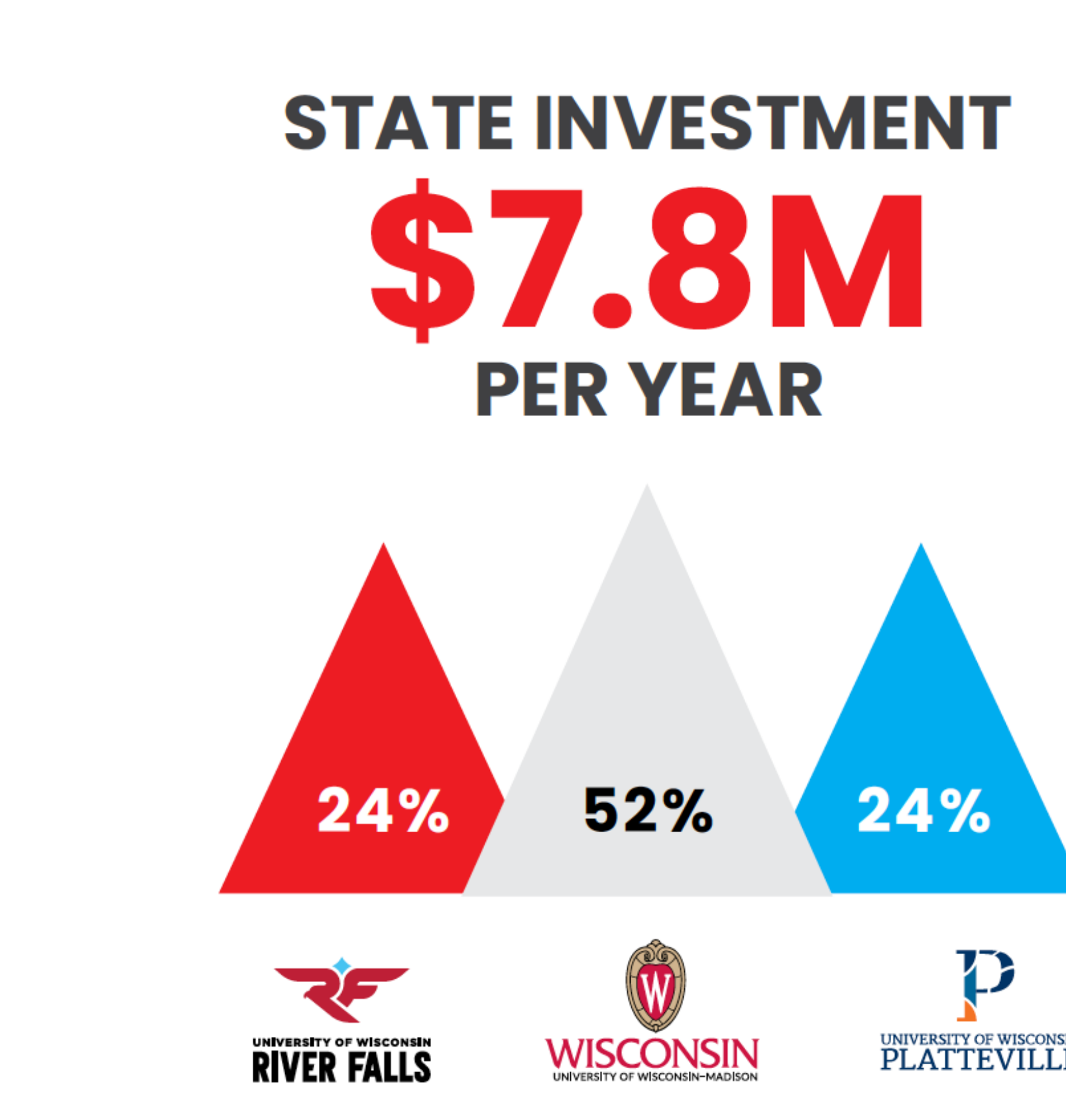


DAIRY INNOVATION HUB

Wisconsin is America's Dairyland!



Funding and focus



Social sustainability

Kate Creutzinger
Animal and Food Science
UW-River Falls



Creutzinger is characterizing cow and calf behaviors after calving in a semi-natural setting, and in management scenarios commonly found in Wisconsin. The goal is to use natural behaviors to inform improvements to typical management scenarios for dairy farmers.

A replicable model

HUB DOLLARS IMPACT WISCONSIN DAIRY THROUGH:



Who benefits from Hub research?



Economic sustainability

Joseph Sanford
School of Agriculture
UW-Platteville



Farmers are looking for cost-effective methods to manage greenhouse gases. Sanford is working to incorporate biochar into manure management systems, including manure storages and anaerobic digestion, to reduce GHG, mitigate odors and advance economic feasibility of anaerobic digestion by improving biogas quality.

FY 22 accomplishments



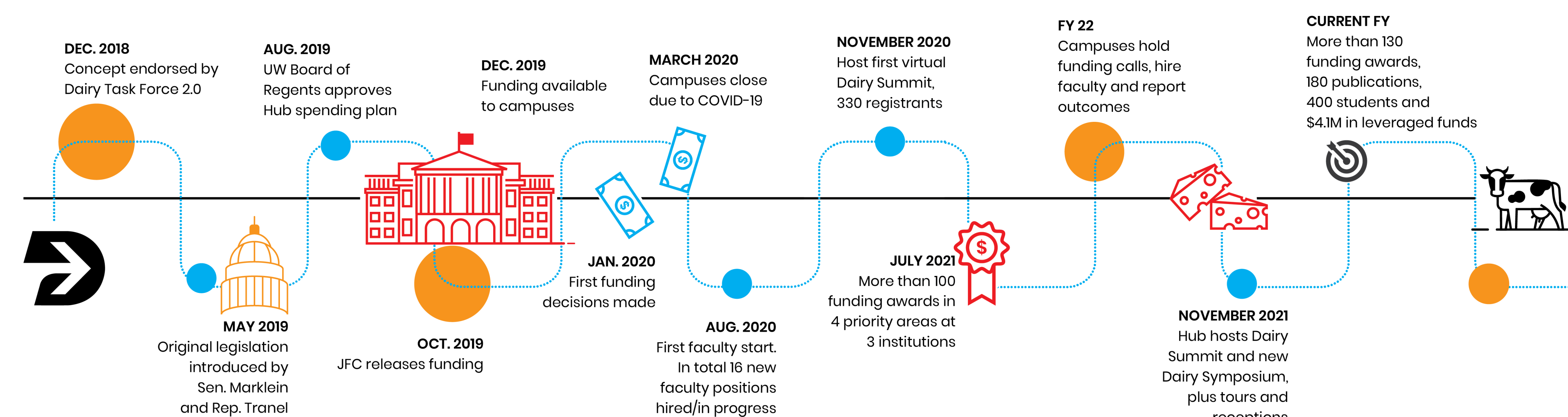
Environmental sustainability

Damon Smith
Nutrient and Pest Management Program
UW-Madison



Most farms across the state need a nutrient management plan. With funding from the Hub, the NPM program created a new, online, self-paced Nutrient Management Farmer Education curriculum. The goal of this project is to increase the convenience of NM planning with this stay-at-home, use-anytime format.

How did we get here?



More information

Subscribe to our newsletter:
dairyinnovationhub.wisc.edu

Engage with us on social:

