

Milc I.D.

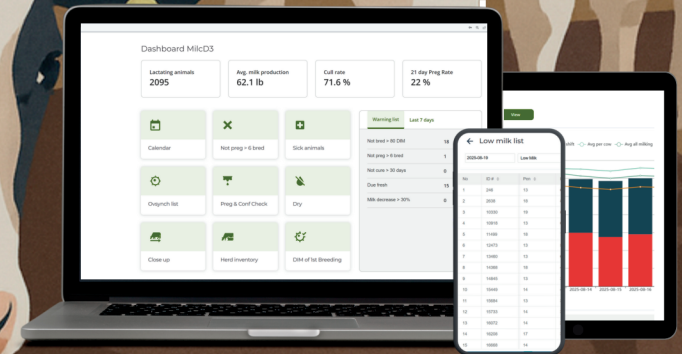
Stall Level Precision

Reader is installed at each individual stall giving up to 99.9% accuracy.



Recognizable Tags

Just replace current ear tags with no additional hardware on cows. Utilizes UHF which safeguards against noise in the parlor.



Accurate real-time milk weights are only available on ONE Animal.



We know it's an investment... but accurate milk weights matter

Lower Barrier of Entry: Affordable technology=easier ROI

Protect Performance: Assess drops in production before health issues escalate.

Reproductive Management: Make rapid breeding and culling decisions with real-time daily milk production.

Feed Management: Evaluate rations for optimized production and intakes with real pen production data.

Financial Insight: Drill down on income over feed cost, predict cash flow, and budget proactively.

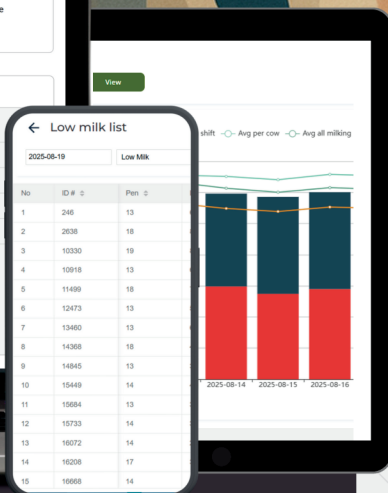
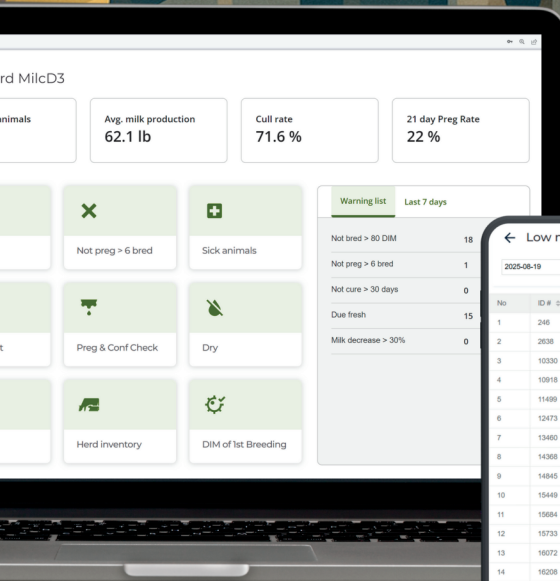
Labor Efficiency: Spend less time tracking individual cows and more time acting on whole herd metrics.





milcgroup.com


800.308.2178


Milc I.D.




Milc I.D. delivers up to 99.9% accuracy, tracking every cow, every time. No more guessing. Just real cow-level data you can trust for IOFC and herd decisions.

 **Real-Time Recognition:**
Cows are identified instantly in the parlor keeping data up to date without delays.

 **Cow-Level Profitability:**
Ties accurate ID to IOFC, so managers know exactly which cows are paying their way.

 **Labor Savings:**
No more manual cross-checking or data entry, freeing up employees for higher-value tasks.

 **Integration with ONE™ Animal:**
Links identification directly to production, health, and feed records for a complete picture.