

 CentralStar

HERD-MANAGEMENT *SOLUTIONS*



2025

GET MORE
FROM *YOUR*
HERD'S HEALTH.

*We bring the highest level of service and commitment
to your cows, your farm, and your goals.*



**Feed, nutrition and
management expertise**



Employee-Owned • www.vitaplus.com • 800.362.8334

CALF CARE PRODUCTS

Calf Coats
Direct-Fed Microbials
Electrolytes
Housing
Milk Replacers & Supplements
Environmental & Management Events

4-9

COW CARE PRODUCTS

Animal Assistance
Direct-Fed Microbials
Forage Inoculant
Fresh-Cow Care
Sanitizer
Cow-Side Tests
Udder Health

10-15

DIAGNOSTIC TESTS & SUPPLIES

Testing Supplies, Kits, & Shippers
Testing Options

16-18

REPRO TOOLS

Breeding Supplies
Heat Detection
Nitrogen Tanks

19-21

PEST CONTROL

Dewormer
Fly and Insect Control

22-23

EAR TAGS

RFID Tags
RFID Stick Readers
Swine Tags
Taggers and Accessories
Visual Tags

24-25

SUSTAINABILITY SOLUTIONS

SOP™ Lagoon
SOP™ Activator

26

ORGANIC PRODUCTS



MAY BE USED IN ORGANIC PRODUCTION. VERIFY WITH CERTIFIER PRIOR TO USE.



CERTIFIED ORGANIC

LOOK FOR THE ICON!



CentralStar

SCAN TO ORDER ONLINE!



How to Scan QR Codes:

1. Open camera app
2. Point camera to QR code
3. Click the link

To order, contact your CentralStar team member, call 800.631.3510, or scan the QR code to order online at www.mycentralstar.com.

Prices and availability are subject to change without notice.

Due to nationwide supply shortages not all products are available in all areas. To confirm price, availability, and shipping costs, contact your local CentralStar team member or call 800.631.3510.

Products listed are merely distributed by CentralStar Cooperative and manufactured or processed by the company indicated. We make no warranties of any kind whatsoever, expressed or implied, which extend beyond all warranties of merchantability and fitness for a particular purpose. In the unlikely event that any of the products or services shall be proven to be defective, damages from their use shall exclude consequential damages and be limited to their purchase price. Complete product and trademark information available at <https://mycentralstar.com/legal-notices/>.

CALF PRODUCTS



**SCOURING DAIRY CALVES
TREATED WITH ANTIBIOTICS
GAVE 1,086 LBS.
LESS MILK
DURING THEIR FIRST LACTATION.***

See page 5p for ways to help prevent scours.




**CALF
SCOURS
PROTOCOL**



**CALF
DEVELOPMENT
PROTOCOL**

Which supplement is right for your calves?

When a calf is born there is an immediate and constant barrage of environmental challenges trying to “destroy” your newest and most promising genetic investment. How much support do your calves need? Below are solutions to address the light (●), moderate (●), and heavy (●) challenges your calves face.

 BIRTH TO 500 LBS.	At Birth	Immune Support	Appetite Enhancer	Dehydration	Transition	Scours	Stress (Vaccination, dehorning, transport, etc.)	Respiratory Support	Beef x Dairy	Show Animals
AccelAIRate		●	●			●	●	●	●	
Accel Energy (cold weather support)		●					●			
Accel RS		●	●	●		●		●		
BioCycle Showcase		●	●		●		●			●
Calf Accelyte			●	●		●	●			●
CONVERT™ Day One Calf Gel / Bolus	●	●	●	●	●	●	●	●	●	●
CONVERT™ BIG Calf	●	●	●	●	●	●	●	●	●	●
FerAppease®			●		●		●		●	●
First 21		●				●	●			
First Day Formula Colostrum Replacer	●	●	●							
First Day Formula Colostrum Replacer Deluxe	●	●	●							
First Day Formula Colostrum Supplement	●	●	●							
Tri-Mic WD		●	●		●	●	●		●	●
Tri-Purify						●				
Tri-Start Jr		●	●	●	●	●	●		●	●
Tri-Start Jr Plus	●	●	●	●	●	●	●	●	●	●

*Dairy Calf Management Practices Impact Future Production, University of Kentucky, Donna M. Amaral-Phillips.



Calf Direct-Fed Microbials

CONVERT™ Gel

Bolsters the health of newborn and pre-weaned calves by inoculating the digestive tract and restricting pathogen growth. Contains 5 billion live and stable CFUs of beneficial bacteria, and egg-based specialized proteins, which assist in the reduction of scour-causing organisms by altering their growth environment. Antibiotic free. Use at birth, when calves are lethargic, not eating or doing poorly, at transport/pen movement, and when under environmental stress. Blue-color gel turns manure green, ensuring treatment compliance.

AC9057 - Single Dose 15cc	\$8.00
AC9006 - Multi Dose 60cc	\$18.50
AC9041 - Day One Calf Bolus 40ct	\$190.00
AC11007 - Day One Calf Bolus 10ct	\$53.00



CONVERT™ BIG Calf Powder

Assists calves from birth through weaning while consuming milk or milk replacer. Stable beneficial bacteria (1 billion CFU's) and egg-based specialized proteins improve nutrient absorption, restrict pathogen growth, enhance immune function, and stimulate starter-feed intake. Field-trial shows improved daily feed intake and lung scores. Mix 5g with colostrum or milk for the same benefits as 15ml of CONVERT Gel.

AC9058 - 12.5lb pail	\$560.00
AC9059 - 2.2lb jar	\$124.00



Tri-Start JR - Maroon Bolus

A direct-fed microbial bolus that benefits both the rumen and intestinal tract of calves. Each capsule has a guaranteed viable (live) count of 20 billion colony forming units (CFU) of naturally occurring microorganisms. Helps to stimulate feed intake during periods of change. Contains beneficial microbes to jump-start a calf's stalled digestive system.

A0052 - 36ct	\$49.00
---------------------	----------------



Tri-Mic WD

A probiotic source to improve digestive microflora. Promotes the early establishment of beneficial digestive bacteria necessary for proper digestion of milk and grain. Aids in rumen development when transitioning to a dry feed. Reduces the occurrence and severity of scours and helps re-establish digestive bacteria following antibiotic treatment, illness, or environmental stress.

A0048 - 500gram	\$24.50
A0049 - 5kg	\$189.50



Tri-Start JR+ Paste

Helps stimulate feed intake during periods of change. Contains live, viable, naturally occurring microorganisms, a short-chain fatty acid, egg protein (IgY), vitamins, and selenium. Enhances the environment of the digestive tract to activate the naturally occurring beneficial digestive microbes.

A0622 - Single Dose 15cc	\$8.50
A0623 - Multi Dose 60cc	\$19.50
A0651 - Multi Dose 300 cc	\$82.00
A0551 - 300 cc Paste Tube Applicator	\$31.00



Select BioCycle Showcase Formula™

Improves digestion and immune function, helping to protect dairy and beef animals of all ages against environmental challenges. A concentrated form of BioCycle, Showcase is supplemented with increased enzyme levels and *Bacillus*, which is shown to improve gut health, growth, and hair growth. Showcase keeps animals healthy and eating during times of stress from transportation to changes in feed and water. Feed to young animals to get an aggressive appetite to improve gain and hay intakes. Feed to show animals at shows to mitigate stress from change in environment and water.

AC9300 - 12.5lb	\$180.00
- 10+ Pails	\$166.50



Broad-spectrum pathogen coverage

CONVERT and Tri-Start JR+ offer broad-spectrum coverage for the most common calf pathogens.



1-5 Days

E. coli



7-9 Days

Rotavirus
Coronavirus



10+ Cool Days

Salmonella
typhimurium



10+ Hot Days

Salmonella
dublin



10+ Days

Cryptosporidium
Clostridium
perfringens A&C



Milk Replacers & Supplements

First Day Formula®

Fortified with essential vitamins and chelated trace minerals. High-quality-whey-protein concentrate from select Grade A dairies, free of organisms causing colostrum-transmissible diseases, like Johne's disease. Each dose contains 150 IgG. CR Deluxe includes First Defense Technology™.

A0043 - CR (replacer or supplement) 500gram

A0044 - CR (replacer or supplement) 20lb

A0045 - CR Deluxe (replacer) 500gram

A0046 - CR Deluxe (replacer) 20lb

A0047 - CS (supplement) 200gram



\$41.00

\$682.50

\$48.00

\$810.00

\$15.75

First 21™

Bridge the immunity gap during the first three weeks of life. Available as a complete milk replacer or nutritional supplement. Incorporates three natural sources of antibodies (plasma, egg yolk, and colostrum) to promote gut health and immune support.

A0080 - Complete Milk Replacer 50lb

A0083 - Supplement 20lb



\$87.75

\$221.50

Misco Digital Refractometer

Test colostrum to determine quality and IgG scale. Measures colostrum quality and serum total protein.

A0667 - Colostrum quality/serum total protein

A0668 - Colostrum quality, serum total protein, milk solids %, or hydration



\$535.00

\$630.00

Accel Energy

An energy supplement containing 60% fat and 7% protein with added vitamins and minerals. Add to milk replacer or whole milk during cold weather stress. Provides readily utilizable energy via spray-dried animal fat to increase the calorie content in a calf's diet.

A0035 - 25lb



\$56.00

Accel Whole Milk Protein Pivot

A pasteurized whole milk (PWM) balancer to be added to PWM and fed to pre-weaned calves.

A0064 - 50lb

\$66.00



RESEARCH-PROVEN to maximize IgG transfer in calves

A Penn State University study found that **First Day Formula® CR**, a whey-based colostrum supplement, enhances IgG transfer better than whole colostrum alone. Adding 50 grams of IgG from the supplement to maternal colostrum achieved the highest absorption rates.

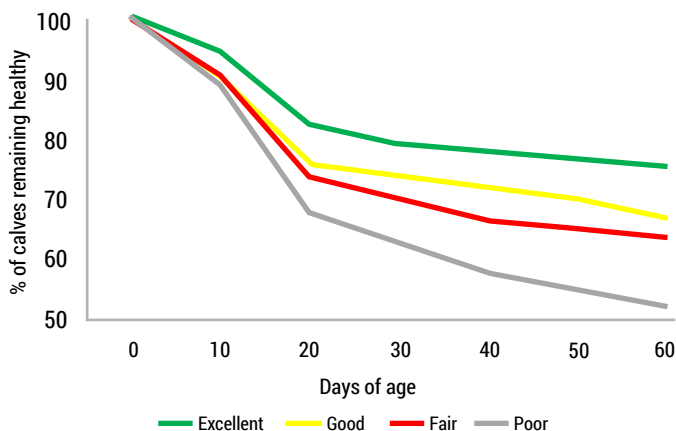


HIGHER IgG LEVELS: Calves with higher IgG transfer have lower mortality and fewer illness episodes.



TEST COLOSTRUM QUALITY: Use a Brix refractometer to test maternal colostrum and add a supplement if levels are low.

Excellent-quality colostrum improves lifetime calf health



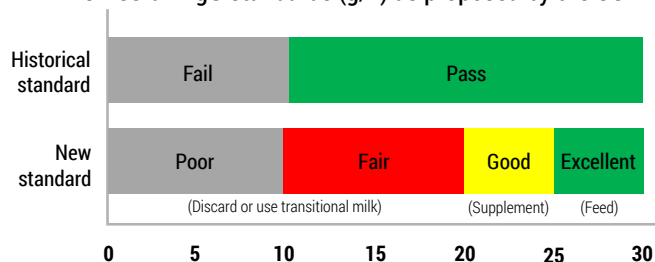
Study results of 2,360 calves at 103 operations demonstrated a larger percentage of calves remained healthier when they received excellent standard-quality colostrum, increasing lifetime calf health for replacement heifers and beef x dairy calves.



IgG LEVELS

IgG STANDARDS: USDA recommends 20-25 grams of IgG per liter of calf serum within 24 hours for better immunity.

New serum IgG standards (g/L) as proposed by the USDA



RESEARCH STUDY DETAILS





Milk Replacers

Stocked Milk Replacer

Unique manufacturing technology results in a 100% instantized product. Powder combines with minimal mixing. Mos* is included in each formulation at research levels to promote gut and intestinal health. Chelated (organic) trace minerals are used to support growth and immune function. Tri-Mic WD in all formulas, optimizes feed intakes and utilization, digestive health, and immune system response. Bovatec® is available for control of coccidiosis.

Orders less than a pallet limited to Wisconsin. Pallet orders available anywhere. Discounts available on pallet, multi-pallet, and semi-load orders. Call for pricing. Shipping charges apply, call for quote. *Mos increases appetite, normalizes gut microflora, and reinforces the digestive tract.

Code	Description	Protein Source	% Protein	% Fat	Guaranteed Analysis			Chelated	AccelAIRate	Medication
					IU/lb Vit A	IU/lb Vit D ₃	IU/lb Vit E	Mineral/Selenium		
A0061	APL Calf Accelerator*	APL	26	20	30,000	5,000	200	YES	NO	Bovatec®-43 grams/ton
A0069	Performance Plus	All-Milk	20	20	30,000	10,000	150	YES	NO	NO
A0070	Performance Plus	All-Milk	20	20	30,000	10,000	150	YES	NO	Bovatec®-90 grams/ton
A0071	Performance Plus*	All-Milk	20	20	30,000	10,000	150	YES	NO	Bovatec®-90 grams/ton
A0074	Hi-Performance Plus	All-Milk	22	20	30,000	10,000	200	YES	NO	NO
A0075	Hi-Performance Plus	All-Milk	22	20	30,000	10,000	200	YES	NO	Bovatec®-90 grams/ton
A0076	Hi-Performance Plus*	All-Milk	22	20	30,000	10,000	200	YES	NO	Bovatec®-90 grams/ton
A0078	Calf Accelerator	APL	26	20	30,000	5,000	200	YES	NO	Bovatec®-43 grams/ton
A0079	28-26 Jersey	All-Milk	28	26	20,000	2,500	100	YES	NO	Bovatec®-72 grams/ton
A0090	22-20 AM DFM MOS AIR BOV	AM	22	20	30,000	10,000	200	YES	YES	Lasalocid 72g/ton
A0091	22-20 AN DFM MOS AIR Fly BOV*	AM	22	20	30,000	10,000	200	YES	YES	Lasalocid 72g/ton
A0092	24-20 APL DFM MOS AIR BOV	APL	24	20	30,000	10,000	200	YES	YES	Lasalocid 72g/ton
A0093	24-20 APL DFM MOS AIR Fly BOV*	APL	24	20	30,000	10,000	200	YES	YES	Lasalocid 72g/ton

*Formulated with Clarify® seasonally and may require volume purchase.

Environmental & Management Events

Calf Accellyte

A complete electrolyte. Contains potassium and sodium to replenish electrolytes and restore proper fluid balance. Blended with glycine and citrate to improve electrolyte and water absorption. Dextrose provides nutritional energy and buffers to help minimize metabolic acidosis. Easily mixes with water.

A0053 - 3.6lb \$31.00
A0054 - 10lb \$78.00
A0055 - 25lb \$169.50



Accel RS

A recovery solution aiding in hydration and digestive health for calves. Contains Tri-Mic WD as a source of live, viable, naturally occurring microorganisms. Accel RS works to restore, re-energize, recolonize, and rehydrate calves.

A0596 - Single Dose 4oz \$3.75
A0599 - 6lb \$64.50
A0597 - 25lb \$164.00



AccelAIRate

Alleviates symptoms of respiratory disease and supports recovery from respiratory distress. Helps reduce irritation of the throat and suppresses coughing, stimulates appetite, and drives feed intake. Contains Mannon-Oligosaccharides (MOS), Beta-Glucans, and Nucleotides to protect against secondary pathogens.

A0040 - 4.4lb \$74.00
A0041 - 22lb \$299.50



Tri-Purify - Blue Bolus

Dietary feed supplement that provides pure, natural essential oils that have a strong antibacterial effect to improve the natural immune system. Combines live, naturally occurring microorganisms to enhance the environment of the digestive tract. Contains nutraceuticals, intestinal bacteria, and live cell yeast, to reduce the severity and occurrence of scours.

A0051 - 36ct \$89.50



Calf Coats

Woolover®

Original Woolover is a high-performance blanket that keeps animals warm and dry, allowing nutrients to be used for growth. Made of 70% wool and 30% polyester. Limited supply.



UM3605 - w/o Buckle Medium *Special ends 3/31/25	\$42.00 \$24.00
UM3603 - w/o Buckle Large *Special ends 3/31/25	\$42.00 \$24.00
UM3683 - w/ Buckle Medium	\$44.00
UM3684 - w/ Buckle Large	\$44.00
UM3667 - Ultra w/o Buckle Small	\$45.00
UM3668 - Ultra w/o Buckle Medium	\$45.00
UM3669 - Ultra w/o Buckle Large	\$45.00
UM3686 - Ultra Lite w/ Buckle Medium	\$48.00
UM3690 - Ultra w/ Buckle Large	\$47.00

AccelCoat

Provides additional protection to calves during cold weather. Made with our exclusive insulation which wicks moisture away from the calf and provides superior thermal capabilities. The outer shell is made of high-strength polyester with a urethane back, making it water resistant. Machine washable and durable against the harshest conditions. A smooth, quilted liner provides warmth and comfort for the calf. Small fits Jersey calves and large fits Holstein calves. Embroidered with the Select Sires Logo.



A0605 - Single Insulated Small	\$39.00
A0606 - Single Insulated Large	\$39.00

CASE STUDIES: CONVERT™ improves growth and respiratory health

HOW IT WORKED: A New York commercial dairy farm faced challenges with delays in the age at weaning, attributed to poor body-weight gain and low calf-starter feed intake. A comparative study was conducted between the existing calf-development program and the Agrarian Solutions Calf Program.

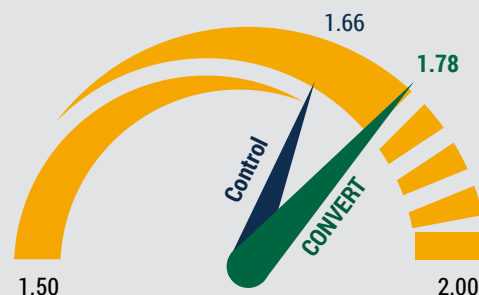
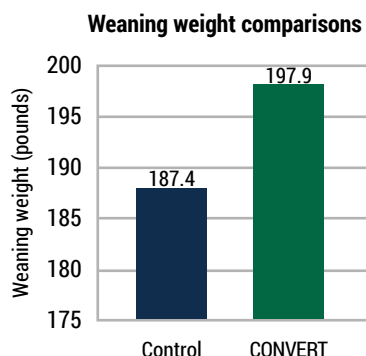
RESULTS: Calves in the CONVERT group had a higher average daily gain and weighed 10.5 pounds more than the control group at weaning.



CASE STUDIES DETAILS

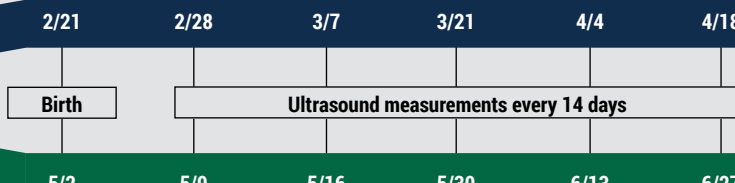


Scan to learn more!



Average daily gain comparison (pounds/day)

Control: Fed colostrum-based gel + milk replacer + starter feed



Agrarian: Fed CONVERT™ Day-One Calf Gel + milk replacer + 1g CONVERT BIG Calf Powder + starter feed

Comparison of ultrasound lung lesion scores across pre-weaning development programs

Treatment	Average age of lung score measurement, days	Average ultrasound lung lesion score
Control	30.1	1.57
Agrarian	29.5	1.45

CalfScan – Calf Lung Ultrasound Scorer – Food Animal Production Medicine – UW–Madison (wisc.edu) 0 = Normal, 5 = three or more lobes completely consolidated.

Control = Complete milk replacer with commercial probiotic product and starter feed.

Agrarian = 15 mL CONVERT™ Day-One Gel at birth, complete milk replacer plus 1gram CONVERT BIG Calf Powder/day and starter feed.

HOW IT WORKED: A New York dairy was experiencing high ultrasound calf-lung-lesion scores and delayed age at weaning due to poor body-weight gain and feed intake. A comparative study was conducted between CONVERT BIG Calf and the existing program.

RESULTS: The CONVERT group had a lower average ultrasound lung-lesion score of 1.45 compared to 1.57 in the control group, suggesting better respiratory health leading to the ability to wean calves earlier due to improved health and starter-feed intake.



Calf Housing

Calf-Tel® "O" Series (Outdoor)

Hutches designed specifically for outdoor use. No matter the size or scope of your operation, Calf-Tel products can help improve labor efficiency, calf health, and overall profitability.

A0625 - Deluxe II Left Opening 24|74 **\$376.00**

A0626 - Deluxe II Right Opening 24|74 **\$376.00**

16% more interior space than competitive models and one-of-a-kind customizable ventilation. All plastic extrusion base makes hutches virtually impervious to destruction.

Deluxe hutch parts box includes: feed door, double inside pail holder, two black pails and fence attachment hardware.

L-rod sold separately.

A0372 - XXL Left Opening 35|85 **\$431.00**

A0373 - XXL Right Opening 35|85 **\$431.00**



A0625 - Deluxe II



A0372 - XXL

Calf-Tel® "I" Series (Indoor)

Easy to configure indoor calf pens to make the most of your space and time. Ultra-durable with a wide range of available accessories. Effective and economical solution for raising calves indoors.

A0376 - Calf Pen Back Airmax **\$95.00**

A0377 - Calf Pen Back Vented **\$91.00**

A0380 - Calf Pen Front Generation 3 **\$196.00**

A0382 - Calf Pen Side 4.5' & 2 rods **\$110.00**

A0383 - Calf Pen Side 6' & 2 rods **\$140.00**

A0384 - Calf Pen Side 7' & 2 rods **\$150.00**



A0376 - Calf Pen Back Airmax



A0377 - Calf Pen Back Vented



Complete Pen System

Calf-Tel® Group Housing

Weaned calves placed in large groups can face growth and health setbacks. Placing 4-5 similarly sized weaned calves in group housing is the best way to ease the transition.

A0375 - MultiMax 54|98 **\$865.00**



Calf-Tel® Accessories

Broad range of accessories designed for ease-of-use, operational efficiency and years of reliable performance.

A0393 - Bottle Holder Hutch mounted 2qt **\$15.00**

A0394 - Bottle Holder Hutch mounted 3qt wide **\$22.00**

A0395 - Bottle Holder Hutch mounted 3qt & 4qt **\$16.00**

A0398 - Bottle Holder Pen mounted 2qt **\$12.75**

A0399 - Bottle Holder Pen mounted 3qt & 4qt **\$9.50**

A0400 - Bottle/Nipple Set 2qt **\$9.50**

A0401 - Bottle/Nipple Set 3qt **\$10.25**

A0402 - Bottle/Nipple Set 4qt **\$12.00**

A0407 - Calf Nipple Super **\$3.50**

A0409 - Calf Pail Black **\$5.50**

A0410 - Calf Pail White **\$5.50**

A0417 - L-Rod Pen **\$7.50**

A0433 - L-Rod Hutch **\$4.50**

A0437 - Pail Holder Fence Mounted Double **\$13.00**

A0438 - Pail Holder Fence Mounted Single **\$9.00**

A0590 - Bottle Chute Fence mounted 2qt **\$16.00**

A0598 - Calf Pail Fence Mounted Black **\$10.50**

A0600 - Calf Pail Fence Mounted Gray **\$10.50**

A0628 - Bottle Chute Pen mounted 2qt **\$9.00**



A0417 - L-Rod



A0590 - Bottle Chute



A0409 - Calf Pail



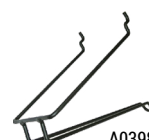
A0393 - Hutch Bottle Holder



A0402 - Bottle



A0407 - Bottle Nipple



A0398 - Bottle Holder



A0598 - Hutch Mount Pail



800.631.3510 • www.mycentralstar.com

*Subject to availability and delivery fees. Request a quote for the most current pricing.

Prices and availability are subject to change without notice.

COW PRODUCTS



METRITIS,
ESTIMATED TO COST \$512
PER AFFECTED COW,
CAN BE A PRE-CURSOR TO
MILK FEVER.

See page 12p for ways to help get fresh cows off to a good start.



**'MANAGING THE
 COSTS AND IMPACT OF
 METRITIS IN DAIRY COWS**

Which supplement is right for your cows?

Healthy cows produce more high-quality milk, breed back easier, require less time and labor to manage, and live longer. How much support does your herd need? Below are solutions to address the light (●), moderate (●), and heavy (●) challenges your herd faces.

	Fresh Cow Support	Immune System Support	Mycotoxin Challenges	Erratic Manure	Ketosis Symptoms	Poor Feed Intake	Aborts, Early Embryonic Death	Low Production	High SCC	Poor Reproductive Performance	Beef	Show Animal Stress
Accel Fortifier 1:50	●	●					●	●		●	●	
BioCycle	●	●		●		●		●	●	●	●	●
BioCycle Plus	●	●	●	●	●	●	●	●	●	●	●	
BioFresh Microbial Bolus	●	●				●		●	●		●	●
BioFresh Microbial Gel	●	●				●		●	●		●	●
BioFresh Showcase		●				●					●	●
Bovikalc	●	●										
Bovine Accellyte II	●					●		●			●	●
Ca3 BioFresh	●	●										
DTX		●	●	●	●	●	●	●		●	●	
FerAppease®	●										●	●
Freshen Up	●	●			●						●	
Tri-Mic 1:50	●	●		●		●		●		●	●	●
Tri-Start Bolus	●	●				●					●	●



Direct-Fed Microbials

Select DTX™

Research-tested and field-proven effective for protecting cattle against mycotoxin challenges. Proprietary cell wall deficient bacteria provide broad-range protection against mycotoxins. Use when symptoms are present and feed tests show problems. Available in concentrate for easy mixing at feed mills.



AC9004 - 50lb	\$297.00
- 10 to 35 boxes	\$282.00
- 36+ boxes	\$272.00
AC9009 - Concentrate 50lb	\$369.00
- 40+ bags	\$273.00

Select BioCycle Plus™

Boosts immune function, protects against changing weather and environmental conditions, and defends against mycotoxins. Producers feeding BioCycle Plus report reduced SCC, improved reproductive performance, increased digestive capacity, and improved general health. Use when metabolic diseases and toxin challenges are present, and during feed changes and palatability issues. Available in concentrate for easy mixing at feed mills.



AC9005 - 50lb	\$391.00
- 10 to 35 boxes	\$376.00
- 36+ boxes	\$366.00
AC9027 - Concentrate 50lb	\$477.00
- 10 to 39 bags	\$472.00
- 40+ bags	\$422.00
AC9199 - Concentrate Non-GMO 50lb	\$495.00
- 40+ bags	\$435.00

Select BioCycle™

Aids in boosting immune function, digestion, and fights environmental challenges. Producers report increased estrus expression and improved feed intake. Contains two types of L-form *Lactobacillus*, two sources of yeast, four digestive enzymes, microbial sugars, and specialized proteins. Recommended when performance improvements are needed in reproduction and overall herd health. Not appropriate when mold-related challenges are the major problem.



AC9003 - 50lb	\$239.00
- 10 to 35 boxes	\$224.00
- 36+ boxes	\$209.00
AC9091 - Concentrate 50lb	\$443.00
- 20+ bags	\$378.00

Tri-Mic 1:50

Improves rumen function and health by establishing beneficial microbial populations which helps crowd out pathogens. Beneficial microbes improve feed utilization, re-establishes beneficial microbial populations, following treatment or stressors.



A0000 - 4lb	\$32.00
A0001 - 20lb	\$149.50

BioFresh® Microbial Bolus

Gets fresh cows on feed faster, reducing potential metabolic disorders and DAs. Proven effective in reducing SCC by boosting immune function of cows affected by environmental challenges. Supplies critical vitamins and minerals, beneficial bacteria, and egg-based specialized proteins.



AC11011 - 50ct	\$127.00
AC11012 - 400ct	\$868.00

BioFresh® Microbial Gel

Enhances feed intake, improves ruminal fermentation, and supports immune function for dairy and beef cattle of all ages. Use at weaning, receiving, transporting, calving, off-feed, or during low-intake periods. Supplies beneficial bacteria, egg-based specialized proteins, and critical vitamins and minerals. 5ml for calves under 500lbs., 10ml for calves 500lbs. – adult cattle.



AC11020 - Tube 280cc	\$55.00
AC11022 - Gel Applicator Gun	\$46.00

Tri-Start Bolus

Encapsulated, highly concentrated source of rumen-specific microbes. Enhances the rumen environment to improve digestive performance and repopulate rumen microflora after periods of stress.



A0003 - 25ct	\$53.00
A0004 - 100ct	\$185.25

Accel MXL 600

Combats feed quality challenges and enhances liver function. MXL 600 is a combination of beneficial micronutrients designed to assist animal performance during periods of feed quality challenges. Use when toxins are present.



A0008 - 50lb	\$83.75
---------------------	----------------



CLOSEOUT

MASSIVE SAVINGS!

Only available online
Look for the "closeout" banner



SAVE
TODAY!

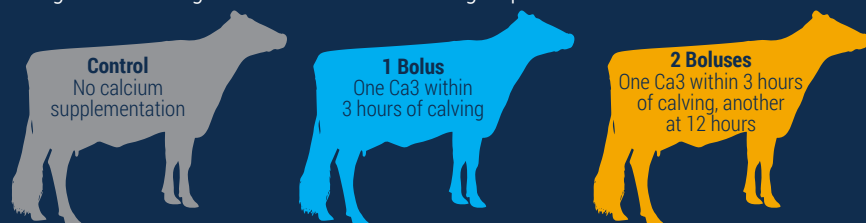


INDEPENDENT RESEARCH: Ca3 BioFresh® Bolus reduces subclinical hypocalcemia for better fresh-cow performance

Despite widespread use of negative-DCAD close-up diets, 25-50% of second-lactation and older cows experience subclinical hypocalcemia (SCH) or milk fever after calving. A hidden form of milk fever that doesn't show obvious signs, SCH can cause increased inflammation, reduced production, lower conception, and higher culling.

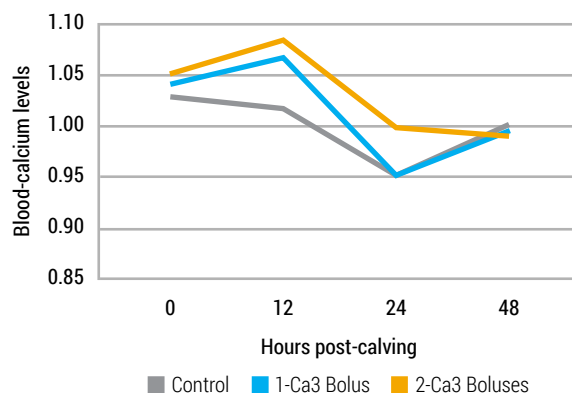


HOW IT WORKED: An independent veterinary-research company conducted a study at a 6,000-cow dairy to evaluate the effectiveness of Ca3 BioFresh® Bolus in reducing SCH. One hundred and five second-lactation and greater cows were randomly assigned at calving to one of three treatment groups:



Blood samples were collected and analyzed for ionized calcium (iCa) at approximately 0, 12, 24 and 48-hours post-calving.

Impact of Ca3 BioFresh® Bolus on blood-calcium levels



RESULTS: Administering Ca3 resulted in higher blood-calcium levels at 12 hours post-calving. Administering a second bolus at 12 hours further boosted calcium levels at 24 hours and reduced the prevalence of SCH.

THREE CALCIUM SOURCES FOR SUSTAINED AVAILABILITY AND VITAMIN D₃ TO ENHANCE METABOLISM

RESEARCH
STUDY
DETAILS



Fresh-Cow Care

Bovikalc®

Calcium supplement provides fast, extended support for blood calcium levels in freshening dairy cows. Bolus disintegrates quickly in the rumen. Calcium chloride is available immediately and calcium sulfate provides sustained release.

BV005 - 48ct



\$382.97

Bovine Accellyte II

Contains specialized electrolytes to replace those lost during stress, minerals needed to compensate for deficiencies from reduced feed intake, and vitamins necessary for life. Use as a drench, add directly to water, or mix dry into feeds. Suitable for cows and calves.

A0009 - 10lb

A0010 - 25lb



\$49.50

\$82.00

Freshen Up

Administer immediately after calving to reduce the incidence of milk fever, retained placenta, and ketosis. Contains a proactive combination of multiple sources of calcium, electrolytes and energy. Use as a drench or offer free choice. Contains four different sources of calcium to give cows the boost they need right away, as well as a timed-release of calcium.

A0012 - 10lb

A0013 - 35lb



\$59.50

\$189.00

Ca3 BioFresh®

Unique calcium bolus contains very high levels of fast, medium, and slow availability calcium (45.5g) and vitamin D₃ (50,000 I.E.) per bolus. Calcium sources have varying release rates to supply calcium evenly to cow. Vitamin D₃ stimulates the liver and improves calcium absorption. Does not contain caustic calcium chloride.

AC11040 - 48ct Box

AC11040 - Pallet 1,920ct (40 boxes)

\$326.40

\$11,289.60

**Pallet price only \$282.24/box - save \$44.16/box!*



FerAppease®

A synthetic analogue of the Maternal Bovine Appeasing Substance (MBAS). Use every time animals are exposed to stressors, where suppression of threat perception is desirable (i.e. castration, dehorning, weaning, vaccination, parturition, breeding, freshening, etc.) Topical administration to the nuchal skin and the skin above the muzzle.

AC2849 - 300mL

AC2850 - Applicator

\$90.00

\$48.00





Teat Dips

UDDERgold® 5-Star

Barrier film, improves environmental mastitis protection. Controls a broad spectrum of bacteria including *Mycoplasma* species. Glycerin and emollient polymers help improve skin health.

UM3661/UM3662 - Base & Activator Set 5gal

UM3724/UM3725 - Base & Activator Set 14.5gal

UM3665/UM3666 - Base & Activator Set 55gal



\$247.54

\$631.78

\$1,945.02

4XLA®

Designed as a pre and post dip with excellent teat-conditioning power. 4XLA is the ideal dip if you want the killing power of UDDERgold 5-Star (15-20 seconds) but don't need the barrier. Proven effective against environmental and contagious organisms, including *Staph aureus*. Replenishes the cow's natural defenses for fighting mastitis. Very effective against hyperkeratosis.

UM3617/UM3618 - Base & Activator Set 5gal

UM3722/UM3723 - Base & Activator Set 14.5gal

UM3621/UM3622 - Base & Activator Set 55gal



\$171.78

\$422.80

\$1,299.16

AZTEC GOLD™

Increased mastitis protection. Offers long-lasting color marking, up to five hours. Thicker viscosity dip clings to teats longer, exposing them to the extended killing power.

UM3678/UM3679 - Base & Activator Set 55gal



\$1,298.02

EfferCept SG®

An alternative to Iodine that is cost effective at any milk price. This tablet contains all the great properties of EfferCept and SoftGuard in one tablet. Proven effective as a pre/post dip or spray. Kills 99.99% of *E. coli*, *Staph aureus* and other mastitis-causing organisms on contact. Conditions, soothes, and protects udder and teats. NPE free. Mix two tablets to one gallon of water.

S291 - Makes 10 Gallons 20ct

S289 - Makes 55 Gallons 110ct

S288 - Makes 275 Gallons 550ct



\$54.30

\$207.66

\$843.00

EfferCept®

Economical pre/post dip. Maximizes killing power while eliminating corrosive effects found in iodine-based products. Pill form mixes with water to be a spray or pre-dip wash. Mix four tablets to one gallon of water.

S240 - Makes 12.5 Gallons 50ct

S242 - Makes 55 Gallons 220ct

S280 - Makes 385 Gallons 20lb

S290 - Makes 667 Gallons 1,000ct

S293 - Foam Additive 1gal

S294 - Foam Additive 55gal



\$66.80

\$234.00

\$1,127.00

\$1,229.10

\$28.00

\$975.00

Early detection **STOPS MASTITIS** before it spreads

The AntelBio™ STRATA-G™ Contagious 3 Mastitis PCR test offers targeted detection for the most pressing contagious mastitis pathogens: *Staph aureus*, *Mycoplasma bovis*, and *Strep agalactiae*. These pathogens are highly transmissible and difficult to cure, often leading to cow loss. The Contagious 3 PCR targets the most serious threats to herd health and is designed for easy use during these crucial times.

FRESH COWS: Fresh cows are most susceptible to mastitis. If you've had issues with contagious mastitis, regular monitoring can help prevent outbreaks. On DHI test day, select all fresh cows since the last test and submit for individual or pooled testing.

NEWLY-PURCHASED COWS: New cows may bring contagious-mastitis pathogens. To avoid an outbreak, collect individual samples as soon as they arrive, and submit for individual or pooled testing.

BULK TANK: If your herd is clear or has recently recovered from contagious mastitis, monthly bulk-tank screenings can help detect any reappearance. Submit bulk-tank samples for monitoring. If pathogens are found, follow up with individual-cow testing.



Save 50%

on a single submission
using the Contagious 3
Mastitis PCR!

Udder Health

Milk Check Teat Wipes

One-step udder preparation wipes are durable, yet gentle. Contain lanolin and glycerin to keep skin soft, preventing teat chapping. Contains germicide to effectively kill bacteria and reduce cross-contamination.

UM3708 - Refill



\$34.96

Uddermint®

Approved Organic. Improves overall udder health by reducing udder edema. All-natural, antibiotic free, peppermint oil based liniment. Dairy producers report improvements in udder quality and pliability within 12 to 24 hours. For use after freshening, or apply to quarters on cows that show signs of mastitis.

UM3608 - White 500mL

UM3673 - Green 500mL

UM3670 - White 2.5L

UM3680 - Green 2.5L

UM3671 - Dispenser 2.5L



\$32.59

\$33.90

\$150.47

\$160.90

\$33.58

T-Hexx® Dry™

Apply pre-calving. External teat sealant creates physical barrier to aid in mastitis prevention. Triclosan-free.

HEXXB132 - 1qt



\$78.12

Lockout™

A non-antibiotic intramammary teat sealant for use through the dry period to aid in the prevention of infections. Visible blue, smooth paste composed of 60% bismuth sub-nitrate forms a malleable barrier in the teat canal. Creates a sterile barrier against harmful bacteria between the udder and environment. Single-dose syringes with short tip designed for hygienic insertion.

UM3694 - 144ct



\$361.88

VetOne® BoviBlock™

Non-antibiotic teat sealant aids in preventing new intramammary infections. Off-white, smooth paste composed of 65% bismuth sub-nitrate to create a malleable barrier in the teat canal. Creates sterile blockage against harmful bacteria. Unique two-stage tip, allowing full or partial insertion into the teat orifice.

UM3702 - 144ct



\$338.71

Bovikalc® Dry

An oral mineral supplement that helps maintain cow comfort by reducing milk production at dry off. Contains calcium sulfate and ammonium chloride and reduces milk production by inducing a slight and temporary metabolic acidosis.

BV057 - 48ct



\$395.65



50% OFF

Save today!

single submission for Contagious 3 Mastitis PCR

Unlimited samples per submission • One submission per customer

Offer valid for customers who have not conducted mastitis testing with CentralStar in the past 12 months. Offer ends 3/31/25.

Name: _____

Address: _____

City, state, zip: _____

Phone: _____ Customer number: _____

Email: _____

(If an email is not provided, results will be mailed.)

Sample Information

Species: ☐ Bovine ☐ Other Collection date: _____ Quantity submitted: _____

Test Selection

Sample Type: ☐ Bulk tank ☐ Individual animal Would you like samples pooled? ☐ Yes ☐ No

Submit samples via DHL or direct to lab. Coupon and sample ID list must accompany submission. Get details from your CentralStar team or michelle.kaufmann@mycentralstar.com.



Sanitizer

EfferSan™ Sanitizer

Sanitizes 99.999% bacteria in 60 seconds. Registered on the Disinfectants for Emerging Viral Pathogens (EVPs) list, can be used against SARS-CoV-2, SARS-CoV-2 - Delta Strain, monkeypox, and respiratory syncytial virus (RSV) when used in accordance with the directions as a disinfectant on hard, non-porous surfaces. Offers 100 times more killing power and effectiveness, while being safer than bleach.

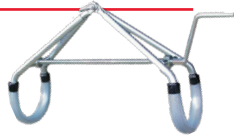


S270 - 24ct	\$24.58
S271 - 100ct	\$77.00
S272 - Spray Bottle	\$6.67

Animal Assistance

Vink Cowlift

Helps save cows that can't stand. With proper use it will not cause bruising around the hipbone and is easily adjusted.



S255 - Complete Cowlift	\$186.00
S278 - Handle Replacement	\$24.64
S279 - Screw Replacement	\$62.53

Vink Double Action Calf Puller

Makes difficult deliveries easy. Double-action puller with unique rump frame encircles the rear of the cow, making it impossible for the frame to slip away. Constructed of stainless steel to ensure long, trouble-free service.



S028 - Complete Calf Puller	\$465.50
S026 - Rope Replacement	\$15.04
S029 - Mechanism Replacement	\$190.73
S030 - Bar Replacement	\$150.00
S031 - Yolk Replacement	\$100.00

Cow Cuff Links

Fastens to a cows ankle with a positive lock buckle system - no velcro. Constructed of 6,000 pounds of tensile strength nylon webbing with stainless steel components. Therapeutic benefits, as well as anti-kicking protection.



AC9026 - Non-Adjustable	\$30.00
AC9047 - Adjustable	\$32.00

Flagger Leg Band

ACO2804 - Orange 10pk	\$15.30
ACR2804 - Red 10pk	\$15.30
ACY2804 - Yellow 10pk	\$15.30

Cow-Side Tests

PC2 - Blood Ketone Strip 50ct *While supplies last!	\$95.08
PC4 - Blood Ketone Meter *While supplies last!	\$31.00
PC3 - Milk Ketone Strips 100ct *While supplies last!	\$105.00

Minerals

Accel Fortifier 1:50

Add to beef and dairy cattle diets during periods when added nutrients are required, such as calving, high production, breeding or during environmental challenges. A concentrated source of chelated and inorganic trace minerals and vitamins. Mix into premixes, minerals, supplements, and total mixed rations (TMR).



A0019 - 25lb	\$59.50
---------------------	----------------

Forage Inoculant

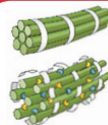
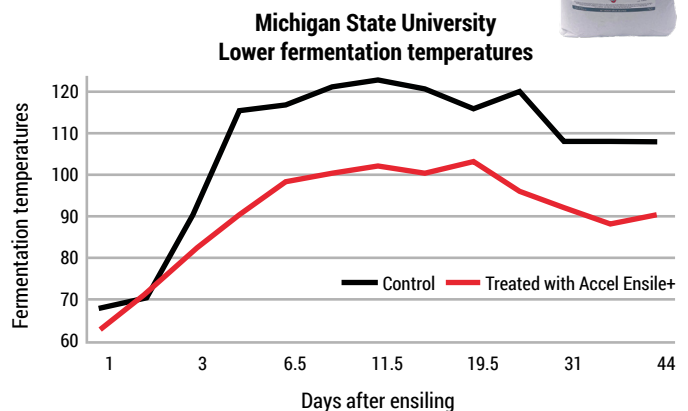
Accel Ensile+

Assists with expediting pH decline to stabilize feed, reducing dry-matter losses and improving digestibility and forage quality. Contains three enzymes which aid in fiber break down and increase nutrient absorption. One of the most economical products on the market.



A0611 - 100W - Wet Applied 100gram	\$87.00
A0612 - 500W - Wet Applied 500gram	\$388.00
A0613 - 100D - Dry Applied 50lb	\$99.50
A0653 - ASB - Contains <i>L. buchneri</i> 500gram	\$490.00

RESEARCH: Accel Ensile+ lowers fermentation temperatures, improves feed stability



Advanced-enzyme package breaks up fiber bundles, allowing rumen microbes more access to plant fiber, increasing nutrient absorption.



Three strains of bacteria: *Pediococcus acidilactici*, *Pediococcus pentosaceus*, and *Lactobacillus plantarum* work throughout all fermentation stages for optimal feed quality.



DIAGNOSTIC TESTS AND SUPPLIES

**A CASE OF CLINICAL MASTITIS
IN THE FIRST 30 DAYS OF LACTATION
CAN RESULT IN AN
ECONOMIC LOSS OF **\$444.****

See page 18p to learn about testing for mastitis and page 14p for products related to udder health.



**WHY IS DHI TESTING
IMPORTANT?**

¹ Preventive Veterinary Medicine, Vol. 122, Issue 3, 12/2015, Pages 257-264

Testing Supplies, Kits, & Shippers

\$10 minimum order for collection supplies, kits, and shippers.
Mix and match to reach the minimum order.

Small Sample Collection Kits (10 samples)

Holds up to 10 samples. Kit includes sample submission form, collection supplies, and prepaid shipping box addressed to laboratory. Testing billed separately.

ABK5 - Small Milk Sample Collection Kit *expedited shipping	\$60.00
ABK16 - Small Milk Sample Collection Kit *standard shipping	\$30.00
ABK13 - Small Blood Sample Collection Kit *expedited shipping	\$65.00
ABK15 - Small Blood Sample Collection Kit *standard shipping	\$35.00



Large Sample Collection Kits

Includes sample submission form, collection supplies, and UPS-paid shipping box addressed to laboratory. Testing billed separately.

ABK11 - Large Blood/Ear Notch Collection Kit (Holds up to 100 blood/tissue samples)	\$120.00
ABK12 - Large Milk/Fecal Collection Kit (Holds up to 60 milk/fecal samples)	\$95.00

*For larger sample submissions call 800.631.3510.



Sample Collection Supplies

ABK6 - Milk Vial with preservative	\$1.00
ABK7 - Blood Tube and Needle (Red-top: Pregnancy, Johne's, Leukosis, BVD, Neospora. Purple-top: A1/A2, STRATA-G BLV PCR)	\$1.25
ABK8 - Fecal (vial and glove)	\$1.00
ABK9 - Tissue (vial)	\$1.00

Ear Notcher

Small size V cut ear notcher is made of lightweight die-cast aluminum construction. Heat-treated cutting plate for long life and clean cuts. Individually hand-fitted and tested for precision tolerance. Use to collect ear notch for BVD or A2 testing.

ID3207 - V SM 5/16 7000



\$34.73

RESEARCH: How more resting time fuels health and production

When cows have more time to rest, it directly boosts production and rumination. Using milk samples for pregnancy confirmation saves time and labor!



~30 minutes/day
of drinking¹



~12 hours/day
of lying and (or)
resting time²



~4 hours/day eating²
and consuming
9-14 meals per day¹



~2 hours/day
being milked²



~7-10 hours/ruminating¹
(Excessive headlock time
decreases rumination)



¹De Vries, A. Determinants of the cost of days open in dairy cattle. Proceedings of the 11th International Symposium on Veterinary Epidemiology and Economics, 2006.

²De Vries, A. Economic Value of Pregnancy in Dairy Cattle. Journal of Dairy Science 89:3876-3885, 2005.



WHICH TEST DO I NEED?

Diagnostic tests		Code	Sample type	Turnaround	Price/sample
A1A2	PCR	ABT50, ABT51, ABT52	Milk, Whole Blood, Tissue	10 days	\$13.75
BLV Leukosis	PCR	ABT35	Whole Blood	10 days	\$12.00
	ELISA	ABT7, ABT8	Serum, Milk	5 days	\$6.50
BVD	ELISA	ABT11, ABT12, ABT14	Milk, Serum, Tissue	5 days	\$6.50
	PCR	ABT38	Milk, Tissue, Whole Blood	10 days	\$40.00
	Pooled PCR (Min 10)	ABT22	Tissue, Whole Blood	10 days	\$3.70
	Pooled PCR (Min 20)	ABT44	Milk	10 days	\$2.50
Johne's	ELISA	ABT1, ABT2	Milk, Serum	5 days	\$6.50
	PCR	ABT3	Fecal	10 days	\$40.00
	Pooled PCR (Min 3)	ABT43	Fecal	10 days	\$12.00
	PCR	ABT15	Milk	10 days	\$50.00
Mastitis PCR	Complete 16	ABT32	Milk	2 days	\$40.00
	Pooled Complete 16 (Min 3)	ABT41	Milk	2 days	\$10.00
	Contagious 3	ABT47	Milk	2 days	\$30.00
	Pooled Contagious 3 (Min 3)	ABT48	Milk	2 days	\$8.00
	Single Mastitis (<i>Mycoplasma bovis</i> , <i>Strep ag.</i> , <i>Staph aureus</i> , <i>Strep uberis</i> , <i>Prototheca</i>)	ABT53, ABT54, ABT55, ABT56, ABT61	Milk	2 days	\$14.25
	Pooled Single Mastitis (Min 3) (<i>Mycoplasma bovis</i> , <i>Strep ag.</i> , <i>Staph aureus</i> , <i>Strep uberis</i> , <i>Prototheca</i>)	ABT57, ABT58, ABT59, ABT60, ABT62	Milk	2 days	\$4.00
Neospora (Available through Wisc. Lab only.)	ELISA	ABT24	Serum, Whole Blood	5 days	\$6.50
Pregnancy	ELISA	ABT26	Serum, Whole Blood	1 day	\$4.00
	ELISA	ABT27	Milk	1 day	\$4.75
Component analysis					
	MUN		Milk	1 day	\$1.50
	SCC/Components		Milk	1 day	\$1.50
	MUN/SCC/Components		Milk	1 day	\$3.00

GETTING RESULTS

- Submit samples direct to CentralStar laboratories or through routine DHI testing. \$10 submission fee for diagnostic tests.



CentralStar Michigan Lab
1163 Comet Lane
Suite 100
Grand Ledge, MI 48837

CentralStar Wisconsin
Lab Complex
200 East Kelso Road
Kaukauna, WI 54130

- Test results available online, email, or mail. Text results available for some tests. Results available for upload into herd management software.
- Johne's Analysis DHI report 420 organizes test results, production, SCC, and reproduction data for quick analysis to take management actions.



UNLOCK THE VALUE of your milk samples

Unlike traditional methods, testing milk samples to gain insights for production, health, and physiology, eliminates on-farm labor to find, sort, and lockup cows, improving cow comfort, while saving time and money.

Ask your CentralStar DHI Specialist to add any test to routine DHI samples, or ship samples direct to laboratory.

Learn more from your CentralStar team or call 800.631.3510.

LEUKOSIS

Use the Milk ELISA test to identify positive cows at freshening or dry off. Use the BLV Herd Profile to determine initial herd prevalence.

A1/A2

Genotyping assay identifies A1 and A2 beta-casein status of individual animals. Not for use on bulk tank samples. Test the whole herd at once, or each cow after freshening to help guide breeding decisions.

JOHNE'S

Use the Milk ELISA test to identify positive cows at freshening or dry off.

BVDV

Use the Milk ELISA test to identify positive cows at freshening or dry off. Use the BVD Pooled Milk PCR test to check the entire herd at one time when an outbreak is suspected.



PREGNANCY

Effective 28-days post-breeding. As effective as traditional methods. Use for P2, P3, and dry checks to reduce the number of cows needing to be locked up on vet check day, saving the cows valuable resting time.

MASTITIS PCR

To diagnose mastitis in cows, both clinical signs (udder inflammation, milk change, etc.) and sub-clinical signs (elevated SCC) should be evaluated. If mastitis is present, PCR testing can identify pathogens.

Single Assays: Use to identify infected cows in herd known to have a problem with one of the following pathogens: *Staph aureus*, *Mycoplasma bovis*, *Strep ag.*, *Strep uberis*, or *Prototheca*

Contagious 3: Screens for major contagious pathogens: *Staph aureus*, *Mycoplasma bovis*, and *Strep ag.* Ideal for checking fresh or newly purchased cows.

Complete 16: Identifies pathogens causing both clinical and subclinical mastitis, covering all organisms from Single and Contagious 3 assays, plus common environmental pathogens.

REPRODUCTION TOOLS

SCAN TO
ORDER
ONLINE



1% IMPROVEMENT IN PREGNANCY RATE IS WORTH \$15-\$35 PER COW PER YEAR

Pages 19p-21p provide information on tools to aid in breeding.



THE DOLLAR VALUE
OF A PREGNANCY

Reproduction Tools

D-Y Herd Monitor

- AC2802 - Monitor
- ACB2803 - Blue 30/sheet
- ACG2803 - Green 30/sheet
- ACP2803 - Pink 30/sheet
- ACR2803 - Red 30/sheet
- ACY2803 - Yellow 30/sheet



\$238.00
\$0.47
\$0.47
\$0.47
\$0.47
\$0.47

A.I. Training

- SS100 - A.I. Training Manual
- SS145 - Supplemental A.I. Training Manual Spanish
- SS170 - Basic A.I. Training DVD English
- SS171 - Basic A.I. Training DVD Spanish
- SS180 - Basic A.I. Training Video English
- SS183 - Basic A.I. Training Video Spanish
- SS184 - Heat Detection & Timed A.I. Video English
- SS185 - Heat Detection & Timed A.I. Video Spanish

\$25.00
\$3.00
\$20.00
\$20.00
\$20.00
\$20.00
\$15.00
\$15.00

CowManager®

24/7 monitoring of your herd's reproduction. Ear tag transmits data every 15-minutes. Fertility alerts accurately identify which cows are in heat, provides precise information on optimal time to breed and identifies anovular and cystic cows. Nutrition and health information also available.

See www.mycentralstar.com/cowmanager to learn more.



INDEPENDENT RESEARCH:

DTX™ proven to boost milk and reproduction



Mycotoxin contamination in dairy diets reduces milk production and reproductive success, especially in early-lactation cows. A randomized trial at a 3,600-cow New York dairy demonstrates the benefits of DTX™ in maintaining both milk yield and pregnancy rates when cows are exposed to DON and zearalenone-contaminated diets.



+28.6% Preg. rate improvement
A.I. pregnancy rates from 36.7% to 47.2%



Increased +2.5 pounds/cow
Daily milk production for the first 150 DIM

See page 11p for
product details.

RESEARCH
STUDY
DETAILS





Heat Detection

Kamar® HeatMount™ Detectors

ID3220 - 25ct w/Adhesive	\$33.00
ID3230 - 100ct w/Adhesive	\$132.00
ID3223 - Adhesive	\$5.00

Twist-Stik

IDB61029 - Blue 12ct	\$26.40
IDG61029 - Green 12ct	\$26.40
IDO61029 - Orange 12ct	\$26.40
IDR61029 - Red 12 ct	\$26.40
IDG61030 - Green Fluorescent 12ct	\$30.24
IDP61030 - Pink Fluorescent 12ct	\$30.24

Paintstik™

IDB61024 - Blue 12ct	\$13.56
IDG61024 - Green 12ct	\$13.56
IDO61024 - Orange 12ct	\$13.56
IDR61024 - Red 12ct	\$13.56
IDG61012 - Fluorescent Green 12ct	\$13.92
IDO61012 - Fluorescent Orange 12ct	\$13.92
IDP61012 - Fluorescent Pink 12ct	\$13.92
IDY61012 - Florescent Yellow 12ct	\$13.92

Eazi-Breed™ CIDR®

AC21274 - 10ct	\$173.80
AC21285 - Individual Applicator	\$18.33

Estrotest™

IDB3229 - Blue 50ct	\$87.00
IDG3229 - Green 50ct	\$87.00
IDO3229 - Orange 50ct	\$87.00
IDP3229 - Pink 50ct	\$87.00
IDY3229 - Yellow 50ct	\$87.00
ID3232 - Rubber Brush	\$6.75

Detect-Her™ Tailpaint

DTB202 - Blue Wipe-on 6ct	\$51.00
DTMG202 - Mint Green Wipe-on 6ct	\$51.00
DTO202 - Orange Wipe-on 6ct	\$51.00
DTP202 - Pink Wipe-on 6ct	\$51.00
DTR202 - Red Wipe-on 6ct	\$51.00
DTY202 - Yellow Wipe-on 6ct	\$51.00
DTBU208 - Blue Aerosol Upright 12ct	\$101.40
DTGU208 - Green Aerosol Upright 12ct	\$101.40
DTOU208 - Orange Aerosol Upright 12ct	\$101.40
DTPU208 - Pink Aerosol Upright 12ct	\$101.40
DTRU208 - Red Aerosol Upright 12ct	\$101.40
DTYU208 - Yellow Aerosol Upright 12ct	\$101.40

ONE MISSED SHOT! WHY 95% ISN'T GOOD ENOUGH

Compliance with a synchronization protocol is key to achieving optimal breeding results. Timely shots ensure ovulation aligns with insemination, boosting conception rates. Even with 95% correct administration in a seven-treatment protocol like double-Ovsynch, only 70% of cows are properly synchronized by timed-A.I. Best practices include using an 18-gauge, 1.5 inch needle, proper intramuscular injection, correct dosing, drug storage, and accurate animal ID. Missing steps or delaying shots lowers outcomes, requires more interventions, which raises costs and impacts herd performance.

Effectiveness of synchronization protocols as it relates to compliance

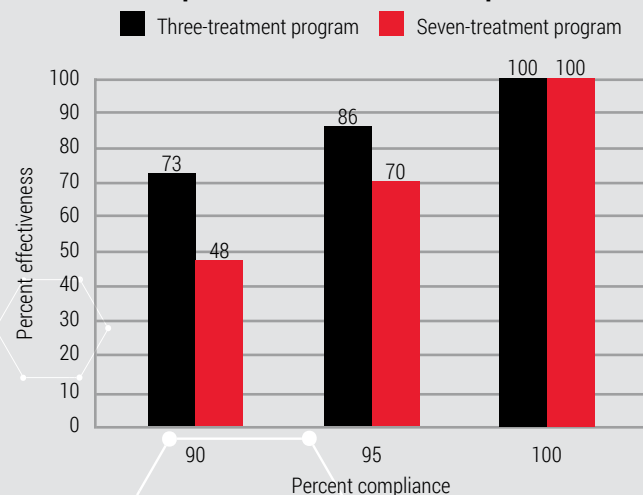


Chart adapted from DCRC "Dairy Cow Protocol Sheet"



Breeding Supplies

A.I. Gun Warmer

Heated, temperature controlled carrying case keeps guns at correct temperature. Includes: 12V rechargeable battery, belt/shoulder strap, 100V AC wall adapter, 12V DC auto adapter, and spare liner. One-year warranty.

IN8011 - Gun Warmer Kit	\$394.16
IN8012 - 14.4V Rechargeable Battery	\$76.63
IN8013 - 100V AC Wall Adapter	\$15.93
IN8014 - Auto Adapter- Gun Warmer	\$12.04



Breeding Sheaths

IN3004 - Individual Sheath - Split 50pk	\$8.87
INP3012 - Pushed Sheath Univ N/S Blue 50pk	\$5.45
INNP3012 - Non-Pushed Sheath Univ N/S Blue 50pk	\$5.45
INP3016 - Pushed Green Indiv. 50/pkg	\$11.37
INNP3016 - Non-Pushed Green Indiv. 50/pkg	\$11.37
INP3017 - Pushed Sheath Blue 50/pkg	\$15.54
INNP3017 - Non-Pushed Sheath Blue 50/pkg	\$15.54
IN3024 - San Sheath Covers 100 roll	\$16.15
INP3025 - Pushed Sheath Green 50/pkg	\$3.86
INNP3025 - Non-Pushed Sheath Green 50/pkg	\$3.86
IN3028 - HD Plastic Sheath Covers 25pk	\$9.88
IN3054 - Metallic Tip Sheath-ET 5pk	\$13.88
IN3056 - Alpha Sheath 50pk	\$10.27
IN3013 - Infuzee w/ Connectors 25pk	\$8.25
IN3031 - Infuzee Pipettes 25pk	\$7.57

Insemination Guns

IN3005 - French Straw Gun	\$30.00
IN3006 - Spare Lock Ring	\$1.05
IN3011 - Spiral Straw Gun 1/2cc	\$30.00
IN3042 - Spiral Straw Gun 1/4cc	\$37.00
IN3053 - ET Breeding Gun	\$128.79
IN8010 - Deep Horn Breeding Gun	\$48.00



Kombicolor Insemination Guns

Use with 1/4 and 1/2cc straws.

INW3045 - White	\$45.71
INY3045 - Yellow	\$45.71
ING3045 - Green	\$45.71
INB3045 - Blue	\$45.71
INR3045 - Red	\$45.71
IN3057 - Plunger	\$17.42



Breeding Gloves

IN3040 - Buff Poly Sleeve 100 box	\$21.94
IN3049 - Red Breeder Sleeve 100 box	\$18.70

Cito Thaw Cup

A sensitive and accurate thermostatic control ensures a constant temperature range of 95°- 98° F. Indicator light shows when the unit is ready to use, and when it is maintaining the water bath at the proper temperature. Includes AC adapter and DC adapter.



IN3058 - Dual Purpose Thaw Cup	\$251.92
--------------------------------	----------

Breeding Kit

Plastic breeding box to hold breeding supplies. Comes with thermos bottle (blue box includes Cito dual purpose thaw cup), Kombicolor gun, universal sheaths, gloves, bottle of Lubogel, tweezers, scissors, and thaw monitor.



IN3015 - Breeding Kit Plastic	\$123.84
IN3023 - Plastic Box Only	\$29.36
IN3051 - Breeding Kit Blue	\$371.73
IN3050 - Blue Box Only	\$98.55



Breeding Extras

IN3029 - Safe-Lube gallon	\$15.13
IN3027 - Safe-Lube 8oz	\$3.85
IN3021 - Thermos Bottle	\$21.91
IN3026 - Thaw Monitor	\$4.00
IN3032 - Tank Measure Stick	\$8.95
IN3041 - Digital Thermometer	\$21.14
IN3020 - Dial Thermometer	\$15.33
IN3007 - Scissors	\$13.11
IN3009 - Forceps - stainless steel	\$12.10
IN3008 - Fiberglass Tweezer 1/2cc	\$3.10
IN3043 - Fiberglass Tweezer 1/4cc	\$4.40
IN3037 - CITO Straw Cutter	\$6.20
IN3061 - Tork Dairy Towel single pack (16 packs in a case)	\$2.10



Nitrogen Tanks

Description	No. of Canisters	Capacity 1/2cc Straws	Hold Time (weeks)	Neck Opening (inches)	2 year Warranty	Weight Filled (pounds)
Millennium XC20	6	720	16	2 1/4	Yes	60
MVE XC34/18 Tank	6	2,100	16	3 1/2	Yes	96
TW20	6	660	16	2 1/4	Yes	63
TW34	6	2,100	16	3 1/2	Yes	94

Call for pricing.

PEST CONTROL



**STUDIES HAVE SHOWN
AT LEAST 84%
OF U.S. DAIRY HERDS
ARE INFECTED WITH BLV.¹**

Fly control may reduce the risk of BLV spread! See page 23p.



**'WHAT
DOES BLV
MEAN
TO ME
AND MY
HERD?'**

Dewormer

DECTOMAX® Pour-On

Treats gastrointestinal roundworms, lungworms, eyeworms, grubs, sucking lice, and mange mites. Meat and milk withholding.

AC2826 - 5L



\$377.72

CYDECTIN® Pour-On

Pour-on formula approved for beef and dairy cattle, including lactating cows. Use for the treatment of infections and infestation of internal and external parasites. Proven to provide persistence against specific species including brown stomach worms, lungworms, barber pole worms, and nodular worms. Zero milk withhold and zero slaughter withdrawal. Contains weather-proof formula with purple dye to easily identify which animals have been treated.

AC2822 - 5L

AC2823 - 10L

AC2844 - 2.5L



\$391.49

\$777.78

\$318.00

EpriGard®

Internal and external parasite control for beef and dairy cattle. Kills 39 species and stages of internal and external parasites. Controls adult worms and fourth-stage larvae, lice, mange mites, grubs, and horn flies. Active ingredient: Eprinomectin at 5g/L.

No milk or meat withholding. **Ask about volume discounts!**

AC2848 - 5L

AC2852 - 10L



\$248.40

\$480.94

Ivomec® Eprinex®

Parasite control that kills 39 species and stages of internal and external parasites. Controls adult worms and fourth-stage larvae, lice, mange mites, grubs, and horn flies. No milk withholding or meat withdrawal (when used according to label).

MR30252 - 2.5L

MR30253 - 5L

MR30254 - 10L

MR19499 - 20L



\$261.84

\$375.58

\$705.96

\$1,318.80

Application quick reference

Product	Parlor/ Milkhouse	Barns	Animals	Hutches	Use
CyLence Pour-On	No	No	Yes	No	Apply to topline every 3 weeks; rotate with Ultra Boss
UltraBoss Pour-On	No	No	Yes	No	Apply to topline every 2 weeks; rotate with CyLence
Intersect Gold Pour-On	No	Yes	Yes	No	Apply as pour-on or in back rubbers, effective on dairy, beef, horses, or sheep
Cattle Armor Pour-On	No	No	Yes	No	Apply to topline, oil-based, reapply every 2 weeks
CyLence Ultra Premise Spray	Yes	Yes	No	Yes	Broad spectrum for indoor or outdoor use
Cyzmic CS Insecticide Premise	Yes	Yes	No	Yes	General use, quick knockdown, up to 90-days residual
EverGreen Premise	Yes	Yes	Yes	Yes	Pyrethrins degrade quickly in sunlight; kills 140+ pests
UDL BP-100 Premise	Yes	Yes	Yes	Yes	To kill stable flies, apply 2 fl oz/adult animal
Neporex	No	Yes	No	Yes	For under bedding in hutches or around perimeter of manure piles and packs
QuickBayt Fly Bait	No	Yes	No	Yes	Fresh product attracts more flies; for house flies, not stable flies
Sticky Roll	No	Yes	No	No	Indoor and outdoor; over headlocks or tie stalls
Dairy Fly Bomb 55Z	Yes	Yes	Yes	Yes	Quick knockdown, no residue



Fly & Insect Control

ULTRABoss® Pour-On

Controls lice, flies, mosquitoes, and ticks on cattle. Effective horn fly control up to eight weeks. No pre-slaughter withdrawal or milk withhold. 3 mL per 100 lbs., body weight.

AC2814 - 1qt

AC2813 - 1gal

AC2851 - 5L



\$45.98

\$159.83

\$216.26

Intersect Gold Pour-On™

Controls lice and flies on lactating and non-lactating dairy and beef cattle of all ages. Apply as a pour-on, mist spray, or in back rubber.

AC2839 - 2.5gal

AC2840 - 1gal



\$215.00

\$100.00

Cylence® Pour-On

Ready-to-use pour-on insecticide for the control of horn flies, face flies, and biting and sucking lice on beef and dairy cattle. Use anytime of the year. No mixing and no withdrawal requirements.

AC2825 - 6pt



\$128.05

Cattle Armor Pour-On

Ready to use pour-on to kill horn flies, face flies, house flies, stable flies, keds, lice, mosquitoes and many more. Works as a pour-on, mist, or diluted in back rubbers. Use on beef cattle, lactating and non-lactating dairy cattle, calves, and sheep.

UM3716 - 55gal



\$1,158.43

Cylence® Ultra Premise Spray

Broad-spectrum control of crawling, flying, and wood-infesting insects, in and around animal housing, warehouses, and processing and packing plants. Provides effective knockdown and residual control of over 60 different pests.

AC2845 - 240ML



\$70.12

Cyzmic® CS Insecticide Premise

Encapsulated premise insecticide for use around livestock buildings. Kills flies, ants, spiders, crickets, moths, ticks, mosquitoes, fleas, beetles, bugs, and more. Provides broad-spectrum control, lasts up to 90 days on a surface, mixes with water.

AC2846 - 1qt



\$80.87

ULD® BP-100 Premise

A versatile fly control that is safe for humans and livestock. Kills flies with extremely low risk of resistance. Application will leave a residue to control flies for up to seven days.

UM3703 - 1gal

UM3706 - 55gal



\$100.24

\$3,069.97

Evergreen® Pyrethrum Concentrate Premise

Water based, broad-spectrum insecticide that can be used in OMRI-certified organic facilities. Contains pyrethrum, a botanical insecticide. Use indoors in food and non-food areas, and in and around livestock facilities. Rapidly degrades in sunlight with no residual activity. Offers fast, effective control of insects including ants and cockroaches.

AC2819 - Organic 1gal

AC2838 - 60-6 Fly Spray 1gal



\$544.59

\$370.28

Dairy Fly Bomb 55Z

Kills and repels stable flies, horse flies, face flies, deer and house flies, mosquitoes, and gnats. Use on beef cattle, dairy cattle, horses, hogs, chickens, and other livestock; in animal barns and storage facilities. Quick killing pyrethrin.

AC2829 - 25oz



\$23.36

Neporex®

Controls stable flies and mosquitoes. Granular formulation larvicide, suitable for scattering or dissolving for pouring and spraying. Can be used as a spot treatment where larvae are found developing. NOT allowed for application directly to livestock, feed or water for consumption, as residues may occur.

Apply to calf hutches, slatted floors, cattle pens, and spillage areas.

AC2837 - 11lb



\$141.82

QuickBait® Fly Bait

Controls nuisance flies in as little as 60 seconds. Ready to use indoors or around livestock production facilities, poultry houses, and horse stables as scatter bait or in bait stations. Contains Bitrex®, a bitter substance to help prevent accidental ingestion by children and animals.

AC2835 - 5lb

AC2836 - 35lb *limited supply



\$57.43

\$239.30

Sticky Roll®

Use in dairy barns, horse stables, and animal premises of all kinds. USDA testing shows it captures 92% of available flies. No baits, toxins, or pheromones are necessary.

AC2832 - Hardware

AC2833 - 1,000ft Roll



\$79.24

\$45.55

 **CentralStar**

800.631.3510 • www.mycentralstar.com

EAR TAGS



**RFID-EID TAGS
ARE THE OFFICIAL TAG
REQUIRED FOR CATTLE,
AIDING IN DISEASE TRACKING
AND DIGITAL RECORD-KEEPING.**



**MINIMIZE MISIDENTIFICATION
WITH GENOMIC TESTING**

Visual Tags

Allflex

Patented laser-ink marking with matching laser-etched number into tag surface guarantees permanent identification for the life of the animal. Special order with custom options available. Available in blue, green, orange, pink, purple, red, white, and yellow.

Medium 1.75" x 1.5" numbered/blank Purple NA

\$1.18/\$0.91

Large 3" x 2.25" numbered/blank

\$1.36/\$1.09

Maxi 4" x 3" numbered/blank

\$1.55/\$1.29

Super Maxi 4.625" x 3" numbered/blank

\$1.91/\$1.39



Z-Tags

With their unique flip-out applicator and no-snag design, Z-tags are a premium ear tag. Available in one-piece and two-piece tags. Available in yellow, purple, black, pink, blue, red, green, orange, and white.

One Piece Calf 2.5" x 3.25" numbered/blank

1.05/\$0.82

One Piece Cow 3" x 4.5" numbered/blank

\$1.45/\$1.30

Two Piece Calf 2.5" x 3.25" numbered/blank

\$1.05/\$0.82

Two Piece Cow 3" x 4.5" numbered/blank

\$1.36/\$1.12



A-Tags

One-piece tag, self-piercing, pinhole tip for faster healing and reduced animal stress. Highly versatile designed for long-term identification and cost effective. Patented laser-ink permanent marking, custom marking and numbering available by special order. Available in blue, green, orange, pink, purple, red, white, and yellow.

One Piece Calf 2.4" x 3.3"

\$1.11/\$0.98

One Piece Cow 4.5" x 3.0"

\$1.35/\$1.22



Y-Tex

Two-piece tags are made of an advanced polyurethane formulation and are engineered to prevent cracking, remain flexible, and provide excellent longevity. All-American ear tag design features a Snap-Lok® collar for superior retention, a long neck for greater visibility and ultraviolet inhibitors to resist fading. Available in orange, blue, green, pink, purple, yellow, red, black, white, and gray

Medium 3-Star 2.25" x 4.875" numbered/blank

\$1.20/\$1.10

Large 4-Star 3.5" x 4.75" numbered/blank

\$1.30/\$1.20



ProfitSOURCE®

Growers want to source calves that are thrifty and ready to hit the ground growing. The ProfitSOURCE program includes management guidelines to ensure calves are thrifty and healthy.



**SCAN
QR CODE
TO LEARN
MORE**

**Daily gain difference for a steer that was healthy
as a calf versus treated for an illness as a calf.**



Feed Conversion Ratio = **6:1**
Daily Gain = **3 pounds**



Feed Conversion Ratio = **7.5:1**
Daily Gain = **2.5 pounds**

The 0.5 pound-per-day difference in daily gain adds up across the feedyard:
[0.5 lbs. reduced gain x 30 days = 15 pounds-per-head, per month]
[15 lbs. x 100 steers = 1,500 pounds of gain lost = 1 finished steer!]



RFID Tags

Allflex Official USDA '840' Ultra EID Tag

The USDA Premise ID number is required to purchase. The tag is ISO Compliant. Extended small male allows a deeper placement in the ear.

ID301914 - Single Tag
- 500+



\$2.90
\$2.75

Allflex USDA '840' Visual Tags

Tags are laser-ink printed and available with custom letters and numbers. The USDA Premise ID number is required. EID button only available in white. Visual tags are available in single or double sets, maxi-female with choice of large or small male: yellow, white, blue, green, orange, red, and pink. Also available with tissue sample units.



Allflex All-in-One

Available in Half Duplex (HDX) and Full Duplex (FDX). Combines Allflex Maxi or Large visual tag with EID component. Tamperproof Ultra Cap™ provides ultimate security and retention. Available in yellow and white.

Blank or numbered, with or w/o text



\$4.98

CowManager®

CowManager Blank RFID Tag

The blank RFID tags are a perfect way to put in CowManager® ear tags, or use with regular RFID tags. Female tags are reusable.

Female
Male



\$2.00
\$0.58

ProfitSOURCE®

ProfitSOURCE

ProfitSOURCE is a complete program offering the expertise of CentralStar's reproductive and genetic specialists. ProfitSOURCE can significantly impact your herd's bottom line by increasing the revenue from your lower genetic value females. *Calves MUST meet all Select Sires requirements to qualify for the ProfitSOURCE™ program. Call for specifications.



Tagging Accessories

Taggers and Accessories

Allflex Ultra Retract-O-Matic for EID/CowManager Tags	\$82.87
Allflex UTT3S Tag Applicator for all 2-piece tags/electronic tags	\$46.90
Allflex Retract-O-Matic for visual/global	\$68.54
Z-Tag Applicator for one-piece tags	\$25.00
Destron Fearing Universal Tag Applicator	\$29.11
Allflex A-Tag Applicator	\$27.83
Allflex Total Tagger Applicator	\$27.38
Allflex Total Tag Applicator Pin	\$3.45
Destron Fearing Pin for ProGrip Universal Applicator	\$3.43
Remover Knife	\$4.33
Z-Marking Pen	\$7.25
Allflex Marking Pen with 3 Tips	\$6.49
Y-Tag Tagger Plus/Combination	\$25.00

EID Stick Readers

Allflex AWR300 EID Stick Reader	\$1,485.10
Allflex AWR300 EID Stick Reader Accessories	\$76.60
Tru-Test XRS2 EID Stick Reader	\$1,750.00
Tru-Test SRS2 EID Stick Reader	\$1,318.58

Swine Tags

840 Visual Swine Tag

Premise number required to order (available through your local Department of Agriculture). Tags offer a tamper-proof button and visual panel stud. Available in white and yellow.

Button



\$1.25

FDX Lightweight Swine Ultra 840 EID

Packaged with small global males, FDX technology utilizes the lightweight EID tag. The USDA Premise ID number (issued by the Department of Agriculture in your state) is required to purchase. Apply with the Allflex universal total tagger or Allflex Ultra Retract-O-Matic for EID tags. Packaged in sets of 20 buttons per package.

Individual Tag

\$2.47



CHECK IT OUT!



Lagoon Management

SOP™ Activator

Promotes the activation of large quantities of dairy-cow and beef-cattle manure in lagoons and pits. This product is the first step in creating a bottom-line friendly byproduct and should be used in combination with SOP Lagoon for the first four weeks of product line application.

A0770 - 20lb



\$390.00

SOP™ Lagoon

The only natural manure product proven to reduce operational dairy and beef expenses while simultaneously suppressing the release of ammonia, greenhouse gas (GHG) emissions, and odors. SOP Lagoon metabolizes nutrients found in animal waste by activating bio-valorization. This process fluidifies waste solids, reducing the need for agitation and bolstering its fertilization properties.

A0772 - 2kg



\$155.00

Carbon Credits Rights Reservation: Resonant Technology™ Group reserves all rights, title and interest in carbon credits, insets and other related economic benefits or interests generated via use of SOP™ Inside products. SOP Lagoon is distributed by Select Sires Inc. through the wholly-owned sustainability company, Low Carbon Technologies, LLC. Buyer assumes all responsibility for use, storage and handling of SOP Lagoon. Low Carbon Technologies, LLC makes no claims or warranties, expressed or implied. *The Low Carbon Technologies logo is a trademark of Low Carbon Technologies, LLC, Plain City, OH. Resonant Technology is a trademark of SOP GROUP S.r.l. SOP is a trademark of SOP S.r.l. Società Benefit.

BUILD A BETTER CALF®



Commercial dairy
in South Dakota



Jersey and BxD Calves

Reduced pneumonia
treatments by more than

72.6%

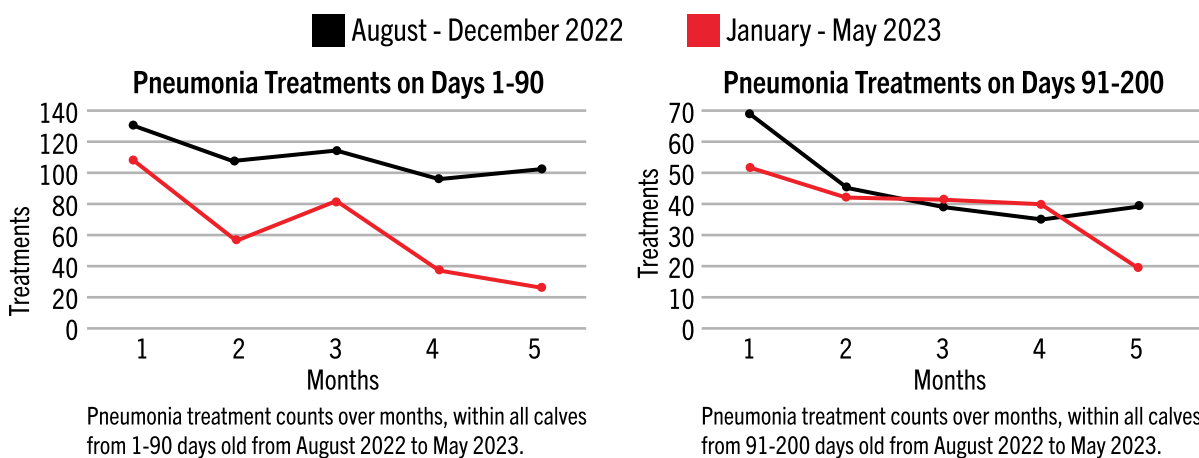
Increased average daily
gain by up to

0.55 lb

ON-FARM TRIAL: ACCELAIRATE

Evaluating the Effects of AccelAIRate on Pneumonia Treatments and Average Daily Gain

HOW IT WORKED: 3,100 calves were fed AccelAIRate at a half dose based on animal body weight for an extended period. Body weights and pneumonia treatment data were collected and analyzed from August 2022 through May 2023.



RESULTS: Supplementing AccelAIRate at half dose for an extended period has reduced the usage of antibiotics and cut pneumonia treatment by **72.6%** and **83%** on-farm while improving average daily gain by an additional **0.28 lb** to **0.55 lb** depending on the calf's age.

TALK TO YOUR CENTRALSTAR TEAM ABOUT **ACCELAIRATE** TODAY!

Buyer assumes all responsibility for use, storage and handling of this product. Select Sires Inc. makes no claims or warranties, expressed or implied. *Build A Better Calf is a registered trademark of Select Sires Inc., Plain City, OH. Manufactured for Select Sires Inc., 11740 U.S. 42 N, Plain City, OH 43064.



SCAN
QR CODE
TO LEARN
MORE