

WIESER CONCRETE



PRECAST SLATTED FLOOR

- Economical
- Fast, Efficient Installation
- Less Square Footage Required per Animal
- Clean, Dry and More Comfortable Animals



- Requires No Mechanical Manure Transfer Equipment
- Highest Quality and Strength Available
- Extra Wear Surface for Longer Slat Life

Proven Performance From The Industry Leader

SAVE TIME, LABOR and MONEY with a TROUBLE-FREE SLATTED FLOOR STORAGE SYSTEM

The Best Investment You'll Make!

WIESER DRI-CAST SLATS GIVE YOU SUPERIOR VALUE AND PERFORMANCE!

THE WIESER DRI-CAST SLAT ADVANTAGE

- **ECONOMY** - Production efficiencies enable Wieser slats to be competitively priced to any average slat.
- **UNIFORM QUALITY** - Wieser's **EXCLUSIVE** Dri-Cast manufacturing process is unique in the industry. Unlike conventional poured slats, Wieser's machine-made slats offer consistent quality for smoothness, finish and texture. The quality control offered by this process means longer product life.
- **STRENGTH** - Wieser Dri-Cast Slats are the strongest you can buy. Dri-Cast concrete is vibrated and compacted in the forms giving a denser, stronger gang slat. Comprehensive strength of this powerful product is 8000 PSI.
- **EXTRA WEAR SURFACE** - All Wieser slats are produced with a 1/2" wear surface for extended service life.

DRI-CAST BEEF SLATS

Choose from **WIESER'S** 7-bar slat features a 5-5/8" wide slat with a 1-1/4" opening. These 4' wide slats are available 12' long and 6" thick. OR **WIESER'S** 6"-thick slat provides a textured wear surface to assure longer life and minimized damage from chipping. These 4 ft. wide panels are available in 8', 10' and 12' lengths. The slat face is 6-1/4" wide with a 1-3/4" slot opening.

Cattlemen....Reduce Your Labor and Increase Your Efficiency!



Slatted floor systems proven to be the **most labor free** and **efficient** method of raising cattle.



Statistics show you get the **greatest** possible feed efficiency and **daily rate of gain**, when cattle are not subject to the stress of weather extremes, wind and muddy lots.

DRI-CAST DAIRY SLATS

WIESER'S superior 6"-thick dairy slat provides a textured wear surface to assure longer life and minimized damage from chipping. These 4 ft. wide panels are available in 8', 10' and 12' lengths. The slat face is 6-1/4" wide with a 1-3/4" slot opening.

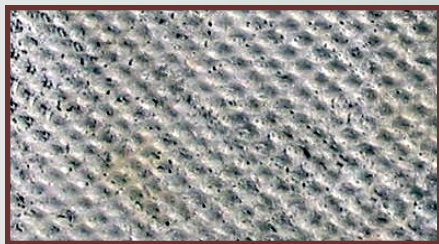


WIESER Slats
and
Robotic Barns...

A Perfect Match!



Slatted Floor Heifer Raising Facilities....A Smart Business Move!



Dri-Cast Slat Texture Finish



WIESER DRI-CAST SLATS
EXCLUSIVE
10-YEAR WARRANTY!

Be sure to ask
your **Wieser**
Representative
for complete details.

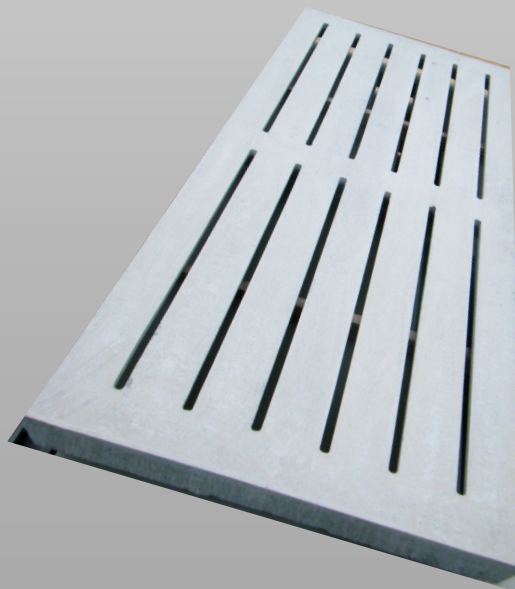
DRI-CAST CALF SLATS

WIESER offers two different slat panels for your calves. The 7-bar slat features a 5-5/8" wide slat with a 1-1/4" opening and the 8-bar slat is 5" wide with a 1" opening. Both of these slat panels are 6" thick and offer the texture wear surface. These 4 ft. Panels are available in 12' lengths.



DRI-CAST HOG SLATS

Our standard hog slat panel is 4' wide and 10' long. The 4" thick panels feature 5 7/8" wide slats with 1" slot openings. We also offer our 5" thick panels in 8', 10' and 12' lengths. Our standard surface is a textured (not slick) dry cast finish.



WIESER CONCRETE

800-325-8456

Visit Us on the Web: wieserconcrete.com