

WIESER PRECAST CONCRETE
CATTLE GUARD

QUALITY VALUE PERMANENCE

CONVENIENCE FOR YOU...
SECURITY FOR YOUR LIVESTOCK



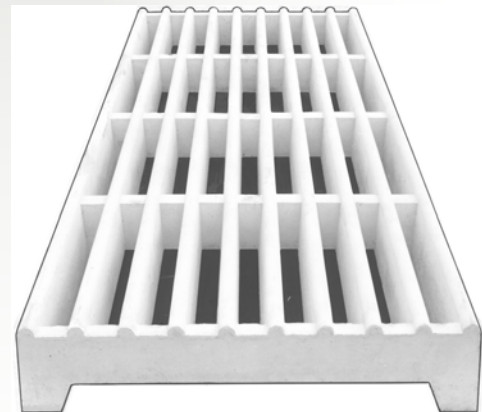
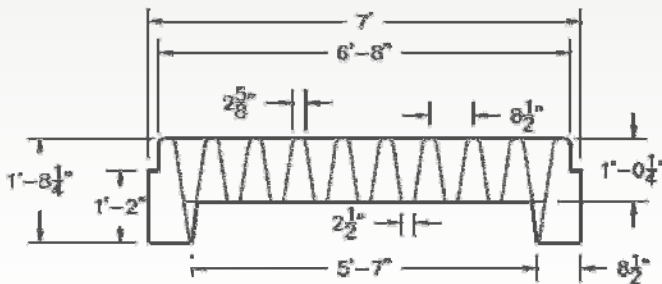
If you drive through your livestock yard for any reason, here's the perfect answer to eliminate the inconvenience and extra time of opening and closing gates. Cattle Guard from Wieser saves you time while providing security for your livestock.

BUILT TO LAST FOR A LIFETIME

These heavily reinforced cattle guards are precast in one-piece for a lifetime of maintenance-free operation. Supports the heaviest machinery load. Both models feature a bottom flow-through design for water passage.

SPECIFICATIONS

LENGTH..... 12 ft. or 16 ft.
 WIDTH7 ft.
 DEPTH.....1 ft.
 WEIGHT 12 ft. - 9000 lbs.
 16 ft. -11000 lbs.



WIESER CONCRETE

(800) 325-8456

Website: www.wieserconcrete.com

WIESER PRECAST CONCRETE
WATER TANKS

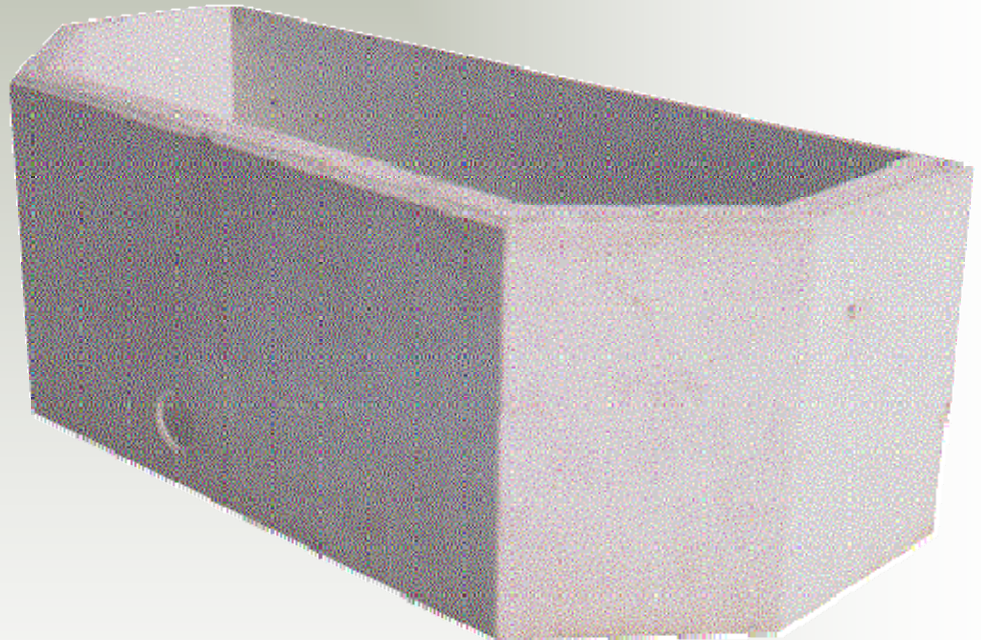
QUALITY VALUE PERMANENCE

Precast Concrete Products
Built to Last a Lifetime

WATER TANKS

WATER TANK SPECIFICATIONS

WIDTH	LENGTH	DEPTH	CAPACITY
3'	7'	2'6"	218 Gal.
6'8"	8'10"	2' 8½"	866 Gal
6'8"	13'2"	2' 8½"	1317 Gal



CALL TODAY (800) 325-8456

WIESER CONCRETE

"Where Quality Is A Standard, Not an Extra"

W3716 U.S. Hwy 10, Maiden Rock, WI 54750

Join Us on the Web: www.wieserconcrete.com