

# Workshop presenters . . . leaders in their field



**Dr. Mike Van Amburgh** is a professor in the Department of Animal Science at Cornell University and currently leads the Cornell Net Carbohydrate and Protein System, a nutrition evaluation and formulation model used worldwide. Van Amburgh has received several awards including the American Dairy Science Foundation Scholar Award, the Land O'Lakes Teaching and Mentoring Award from ADSA, the American Feed Ingredient Association Award for Research, the CALS Professor of Merit Award and the CALS Distinguished Advisor Award. In 2016, he was named a Stephen H. Weiss Presidential Fellow, the highest teaching award given by Cornell University.



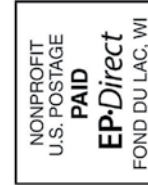
**Dr. Heather White** earned her PhD with Dr. Shawn Donkin at Purdue University, focused on the pathways and genes that control glucose production and fatty-acid oxidation in the liver of transition dairy cows. In 2013, she joined the University of Wisconsin-Madison, Department of Dairy Science-Nutritional Physiology faculty. Her research focuses on metabolism of the liver during the transition to lactation. Recently, White received the Cargill Animal Nutrition Young Scientist Award.



**Dr. Katie Mrdutt**, Program Manager with the Food Armor® Foundation, trains veterinarians and producers in the Food Armor program and provides outreach to those implementing it. She earned her Bachelor's and DVM degrees from the University of Minnesota. In private practice, her emphasis was on dairy production systems. She joined the Wisconsin Veterinary Medical Association in July 2014 and contributed to the Food Armor program's transition to a non-profit foundation in Fall 2016, now called the Food Armor Foundation.



**Dr. Jon Garber**, associate veterinarian at Valley Veterinary Clinic in Seymour, Wis., and a member of the Food Armor® committee. After earning his VMD degree from the University of Pennsylvania School of Veterinary Medicine, he participated in a dairy production medicine residency program. He later earned board certification in dairy practice with the American Board of Veterinary Practitioners and remained at University of Pennsylvania as a clinical lecturer and dairy farm coordinator for the University's Marshak Dairy.



# Transition Cow Workshop

*Maximizing cow health and productivity.*



*designed for*  
dairy farmers, nutritionists  
and veterinarians

Tuesday, Dec. 12, 2017 Eau Claire, Wis.  
Wednesday, Dec. 13, 2017 Appleton, Wis.

Continuing Education Units: up to 5



up to 4.5



up to 5.4 SVM



## Mission Sponsors

Compeer Financial  
Boehringer Ingelheim Vetmedica, Inc.  
Focus on Energy  
Landmark Services Cooperative  
Land O'Lakes  
MorganMyers  
Mycogen Seeds  
Professional Dairy Producers Foundation  
Wisconsin Milk Marketing Board  
Zinpro Performance Minerals

## Corporate Sponsors

Agri-View  
Alforex Seeds  
American Foods Group  
ANIMART  
Arm & Hammer Animal Nutrition  
Atten Babler Commodities LLC  
Bayland Buildings  
BMO Harris Bank  
BouMatic  
CP Feeds LLC  
Dairyland Seed Co., Inc.  
DeWitt Ross & Stevens  
Diamond V  
Elanco Animal Health  
FarmFirst Dairy Cooperative  
Foremost Farms USA  
GEA  
Greenstone Farm Credit Services  
Investors Community Bank  
Merck Animal Health  
Progressive Dairyman  
Roto-Mix  
Rural Mutual Insurance Company  
Twohig Rietbrock Schneider & Halbach, SC  
USAgNet LLC  
Van Beek Natural Science  
Westway Feed Products  
Wisconsin Cheese Makers Association  
Zoetis

Professional Dairy Producers®  
820 N. Main St., Suite D  
Juneau, WI 53039



**Tuesday, December 12**  
**Chippewa Valley Technical College**  
 620 W. Clairemont Ave, Eau Claire, Wis.

**Wednesday, December 13**  
**Fox Valley Technical College - Bordini Center**  
 5 N Systems Dr, Appleton, Wis.

## Agenda

9:30 a.m.	Registration	12:35	Breakout sessions
10:00	General session	3:15	Q&A with experts
12:00 p.m	Lunch	3:30 p.m	Workshop concludes

## General Sessions

### Transition diets:

#### Make big impacts with small adjustments

Bold new discoveries are being made every day for dairy rations. With a focus on transition cows, **Dr. Mike Van Amburgh** unveils what's new and important about energy, protein, critical amino acids and digestibility. He'll cover how amino-acid balancing during this critical period affects productivity. He'll also share insights related to energy and protein ratios and help you identify and avoid common errors in rations for both first-lactation and mature cows.

### Transition cows:

#### When to intervene and how

There's nothing like dairying when cows are transitioning smoothly. But when they go off the rail, nothing costs more. **Dr. Heather White** takes us into the liver of a high-performing dairy cow and shines light on new findings about liver function and ketosis. Learn the signs of declining herd health, discover what's new in risk factors and detection, and optimize the transition period to maximize total herd productivity.

## Breakout Sessions

### Get it right

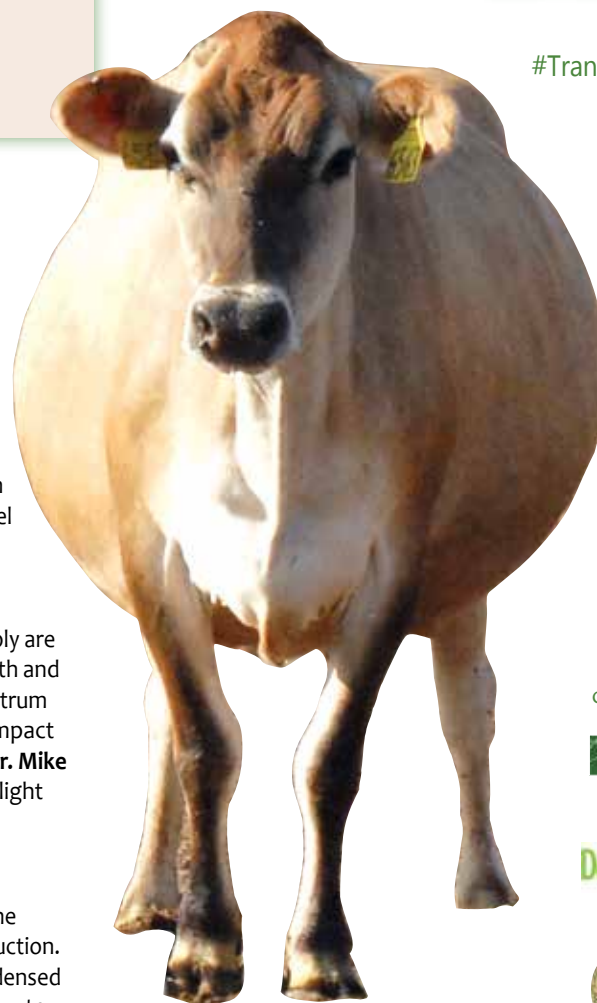
To treat or to cull? This decision has implications for cow health and welfare, profitability, and food safety. **Dr. Katie Mrdutt** and **Dr. Jon Garber** show us why saving every cow is neither realistic nor practical - it often leads to over-treating cows, spending more on drugs and unacceptable cow welfare conditions. Learn to identify the right cows to treat to optimize your level of success.

### Feed for optimal health

Ration formulation, forage chemistry and protein supply are vital to ensuring adequate nutrition for the dam's health and mammary development, fetal development and colostrum needs; so is the digestion of carbohydrates and its impact on amino-acid absorption. To help connect the dots, **Dr. Mike Van Amburgh** will work through case studies to highlight different approaches to healthy transitions.

### Consider a bigger bulk tank

**Dr. Heather White** presents the latest on minimizing the impacts of ketosis and optimizing early-lactation production. She'll highlight what's new regarding choline and condensed ammoniated whey in rations. Learn how they work, how to effectively use them and how to capture the greatest return on cow health and production. This session will challenge the most savvy herd manager and dairy nutritionist.



designed for dairy farmers,  
 nutritionists,  
 and veterinarians

#TransitionCow2017  
 #mypdpw



Continuing Education Unit credits available:

**ARPAS**  
 up to 5

**Dairy AdvanCE**  
 CONTINUING EDUCATION  
 up to 4.5

**W** School of Veterinary Medicine: up to 5.4

## Transition Cow Workshop

Tuesday, December 12, Eau Claire, Wis.  
 Wednesday, December 13, Appleton, Wis.

Name \_\_\_\_\_

Business/Farm Name \_\_\_\_\_

Address \_\_\_\_\_

City \_\_\_\_\_ State \_\_\_\_\_ Zip \_\_\_\_\_

Phone (with area code) \_\_\_\_\_

Email \_\_\_\_\_

### Check which workshop you'll attend:

Tues., December 12 in Eau Claire

Weds., December 13 in Appleton

### Registration fee covers workshop, materials and lunch

Members: \$125 each; \$75/add'l individuals from same dairy.

Non-members: \$250 each; \$75/add'l individuals from same dairy.

	Member \$125 each	Non-member \$250 each
<b>First Participant</b>		
_____	\$ _____	\$ _____
<b>Additional Participants</b>		
_____	\$75 each	\$75 each
_____	\$ _____	\$ _____
_____	\$ _____	\$ _____
<b>TOTAL</b>	\$ _____	\$ _____

### Credit Card Payment Information

Credit Card # \_\_\_\_\_

Exp. Date \_\_\_\_\_ CVC # \_\_\_\_\_

Register online at [www.pdpw.org](http://www.pdpw.org) or by calling 800-947-7379. If paying by check, make check payable to PDPW. Mail completed form to PDPW, 820 N. Main St., Suite D, Juneau, WI 53039.

