

Workshop presenters . . . leaders in their field



Dr. Mike Van Amburgh is a professor in the Department of Animal Science at Cornell University and currently leads the Cornell Net Carbohydrate and Protein System, a nutrition evaluation and formulation model used worldwide. Van Amburgh has received several awards including the American Dairy Science Foundation Scholar Award, the Land O'Lakes Teaching and Mentoring Award from ADSA, the American Feed Ingredient Association Award for Research, the CALS Professor of Merit Award and the CALS Distinguished Advisor Award. In 2016, he was named a Stephen H. Weiss Presidential Fellow, the highest teaching award given by Cornell University.



Dr. Heather White earned her PhD with Dr. Shawn Donkin at Purdue University, focused on the pathways and genes that control glucose production and fatty-acid oxidation in the liver of transition dairy cows. In 2013, she joined the University of Wisconsin-Madison, Department of Dairy Science-Nutritional Physiology faculty. Her research focuses on metabolism of the liver during the transition to lactation. Recently, White received the Cargill Animal Nutrition Young Scientist Award.



Dr. Katie Mrdutt, Program Manager with the Food Armor® Foundation, trains veterinarians and producers in the Food Armor program and provides outreach to those implementing it. She earned her Bachelor's and DVM degrees from the University of Minnesota. In private practice, her emphasis was on dairy production systems. She joined the Wisconsin Veterinary Medical Association in July 2014 and contributed to the Food Armor program's transition to a non-profit foundation in Fall 2016, now called the Food Armor Foundation.



Dr. Jon Garber, associate veterinarian at Valley Veterinary Clinic in Seymour, Wis., and a member of the Food Armor® committee. After earning his VMD degree from the University of Pennsylvania School of Veterinary Medicine, he participated in a dairy production medicine residency program. He later earned board certification in dairy practice with the American Board of Veterinary Practitioners and remained at University of Pennsylvania as a clinical lecturer and dairy farm coordinator for the University's Marshak Dairy.

Continuing Education Units: up to 5



up to 4.5 Dairy Advance CE

up to 5.4 SVM



Mission Sponsors

Compeer Financial
Boehringer Ingelheim Vetmedica, Inc.
Focus on Energy
Landmark Services Cooperative
Land O'Lakes
MorganMyers
Mycogen Seeds
Professional Dairy Producers Foundation
Wisconsin Milk Marketing Board
Zinpro Performance Minerals

Corporate Sponsors

Agri-View
Alforex Seeds
American Foods Group
ANIMART
Arm & Hammer Animal Nutrition
Atten Babler Commodities LLC
Bayland Buildings
BMO Harris Bank
BouMatic
CP Feeds LLC
Dairyland Seed Co., Inc.
DeWitt Ross & Stevens
Diamond V
Elanco Animal Health
FarmFirst Dairy Cooperative

Foremost Farms USA
GEA
Greenstone Farm Credit Services
Investors Community Bank
Merck Animal Health
Progressive Dairyman
Roto-Mix
Rural Mutual Insurance Company
Twohig Rietbrock Schneider & Halbach, SC
USAgNet LLC
Van Beek Natural Science
Westway Feed Products
Wisc. Cheese Makers Association
Zoetis

Event Sponsors



Professional Dairy Producers®
820 N. Main St., Suite D
Juneau, WI 53039



Transition Cow Workshop

Maximizing cow health and productivity.



designed for
dairy farmers, nutritionists
and veterinarians

Tuesday, Dec. 12, 2017 Eau Claire, Wis.
Wednesday, Dec. 13, 2017 Appleton, Wis.



Tuesday, December 12
Chippewa Valley Technical College
 620 W. Clairemont Ave, Eau Claire, Wis.

Wednesday, December 13
Fox Valley Technical College - Bordini Center
 5 N Systems Dr, Appleton, Wis.

Agenda

9:30 a.m.	Registration	12:35	Breakout sessions
10:00	General session	3:15	Q&A with experts
12:00 p.m	Lunch	3:30 p.m	Workshop concludes

General Sessions

Transition diets:

Make big impacts with small adjustments

Bold new discoveries are being made every day for dairy rations. With a focus on transition cows, **Dr. Mike Van Amburgh** unveils what's new and important about energy, protein, critical amino acids and digestibility. He'll cover how amino-acid balancing during this critical period affects productivity. He'll also share insights related to energy and protein ratios and help you identify and avoid common errors in rations for both first-lactation and mature cows.

Transition cows:

When to intervene and how

There's nothing like dairying when cows are transitioning smoothly. But when they go off the rail, nothing costs more. **Dr. Heather White** takes us into the liver of a high-performing dairy cow and shines light on new findings about liver function and ketosis. Learn the signs of declining herd health, discover what's new in risk factors and detection, and optimize the transition period to maximize total herd productivity.

Breakout Sessions

Get it right

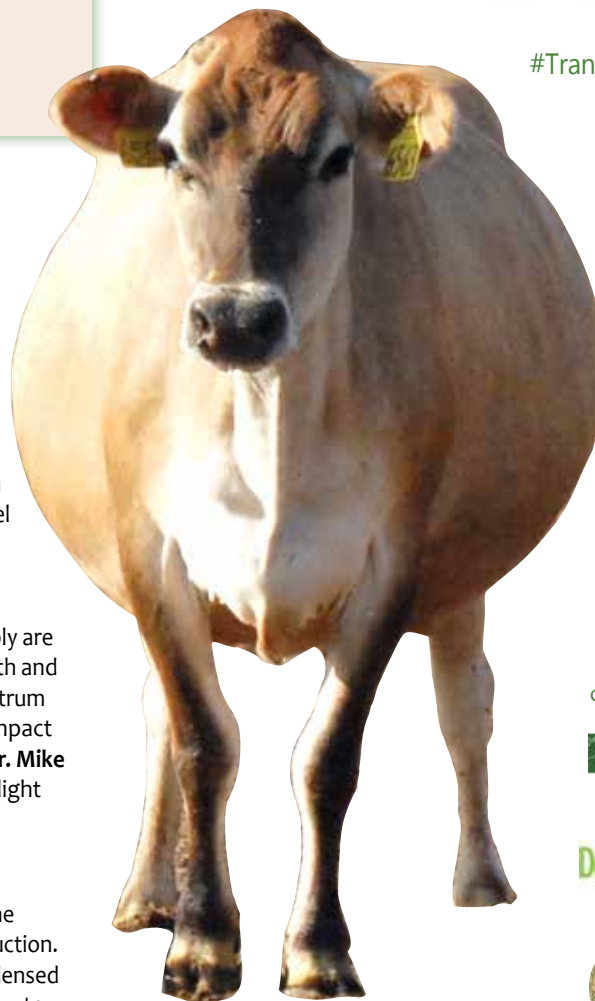
To treat or to cull? This decision has implications for cow health and welfare, profitability, and food safety. **Dr. Katie Mrdutt** and **Dr. Jon Garber** show us why saving every cow is neither realistic nor practical - it often leads to over-treating cows, spending more on drugs and unacceptable cow welfare conditions. Learn to identify the right cows to treat to optimize your level of success.

Feed for optimal health

Ration formulation, forage chemistry and protein supply are vital to ensuring adequate nutrition for the dam's health and mammary development, fetal development and colostrum needs; so is the digestion of carbohydrates and its impact on amino-acid absorption. To help connect the dots, **Dr. Mike Van Amburgh** will work through case studies to highlight different approaches to healthy transitions.

Consider a bigger bulk tank

Dr. Heather White presents the latest on minimizing the impacts of ketosis and optimizing early-lactation production. She'll highlight what's new regarding choline and condensed ammoniated whey in rations. Learn how they work, how to effectively use them and how to capture the greatest return on cow health and production. This session will challenge the most savvy herd manager and dairy nutritionist.



designed for dairy farmers,
 nutritionists,
 and veterinarians

#TransitionCow2017
 #mypdpw



Continuing
 Education Unit
 credits available:

ARPAS
 up to 5

Dairy AdvanCE
 CONTINUING EDUCATION
 up to 4.5

W School of
 Veterinary
 Medicine: up to 5.4

Transition Cow Workshop

Tuesday, December 12, Eau Claire, Wis.
 Wednesday, December 13, Appleton, Wis.

Name _____

Business/Farm Name _____

Address _____

City _____ State _____ Zip _____

Phone (with area code) _____

Email _____

Check which workshop you'll attend:

Tues., December 12 in Eau Claire

Weds., December 13 in Appleton

Registration fee covers workshop, materials and lunch

Members: \$125 each; \$75/add'l individuals from same dairy.

Non-members: \$250 each; \$75/add'l individuals from same dairy.

	Member	Non-member
First Participant	\$125 each	\$250 each
_____	\$ _____	\$ _____
Additional Participants	\$75 each	\$75 each
_____	\$ _____	\$ _____
_____	\$ _____	\$ _____
TOTAL	\$ _____	\$ _____

Credit Card Payment Information

Credit Card # _____

Exp. Date _____ CVC # _____

Register online at www.pdpw.org or by calling
 800-947-7379. If paying by check, make check
 payable to PDPW. Mail completed form to PDPW,
 820 N. Main St., Suite D, Juneau, WI 53039.

